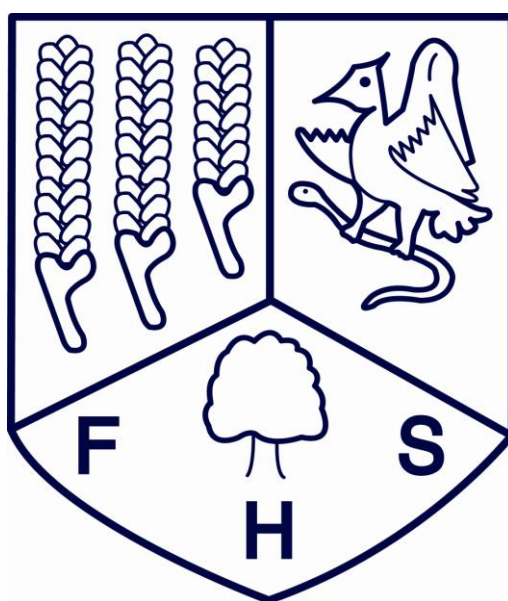


# Featherstone High School

“Together We Achieve”

## Staff Diary 2011-2012



11 Montague Way, Southall, Middlesex, UB2 5HF

Tel No: 020 8843 0984

Fax: 020 8574 3405

Absence: 020 8571 8787

Sports Centre: 020 8813 9886

Sixth Form: 020 8571 8581

[www.featherstonehigh.ealing.sch.uk](http://www.featherstonehigh.ealing.sch.uk)

**Head Teacher:**  
**Resident School Caretaker:**

**Mr Gerry Wadwa B.Sc., M.A**  
**Mr Kevin Barret**

# Contents

|           |                               |
|-----------|-------------------------------|
| Section 1 | Important Information         |
| Section 2 | Staff Duties                  |
| Section 3 | Directed Time                 |
| Section 4 | Staff Structures              |
| Section 5 | School Development Plan       |
| Section 6 | Telephone Extension Directory |
| Section 7 | School Maps                   |
| Section 8 | Academic Diary                |



## First Aid

|   |  |  |
|---|--|--|
| Andrew Webb<br>Teacher<br>Last qualified: Nov 2008                        | John Andrews<br>Teacher<br>Last qualified: July 2009               | Katy Reeves<br>Teacher<br>Last qualified: Jan 2009                           |
| Parveen Choudri<br>Administrator<br>Last qualified: June 2011             | Sharan Sond<br>Administrator<br>Last qualified: July 2009          | Baldish Singh<br>Receptionist in Main Building<br>Last qualified: March 2010 |
| Kuldip Bnait<br>Student Services<br>Last qualified: Oct 2009              | Natalie Shepping<br>Extended Schools<br>Last qualified: July 2009  | Kulvinder Toor<br>Teaching Assistant<br>Last qualified: Jan 2009             |
| Marie Wyatt<br>Exams Officer<br>Last qualified: Jan 2009                  | Anita Asid<br>Teaching Assistant<br>Last qualified: July 2009      | Bubir Panesar<br>Library Assist<br>Last qualified: July 2009                 |
| Nadia Habraszewski<br>Teacher<br>Last qualified: July 2009                | Seema Fatania<br>Cleaner/<br>Lunch Time<br>Controller<br>July 2009 | Amy Maclean<br>Teacher<br>Last qualified: July 2009                          |
| James Mutton<br>Teacher<br>Externally Trained<br>Last qualified: Jan 2011 |  |  |

Equipment is located at:

- Main Reception
- Sixth Form Reception
- Student Services
- Main Staff Room
- Sixth Form Staff Room
- Main Office

# IMPORTANT NOTICE: SAFEGUARDING CHILDREN

At Featherstone High School keeping children and young people safe from harm is one of our priorities. The designated Child Protection officer for the school is Mr Noel.

Child protection is a part of safeguarding and promoting welfare. This refers to the activity which is undertaken to protect specific children who are suffering, or are at risk of suffering, significant harm.

The Safeguarding & Child Protection team at Featherstone High School is as follows:

## The Senior Child Protection Officer is: John Noel, Assistant Head, Access & Inclusion



### Contact details:

**Ext:** 241

**Direct Line:** 020 8571 8788

**E:** jnoel@featherstonehigh.ealing.sch.uk

Office situated on the ground floor of the main building opposite G1.

## In John Noel's absence the following people should be informed:

### For KS5 students:

**Loretta Miller, Lead Learning Mentor  
Child Protection Officer for KS5**

**Ext:** 215

**E:** lmiller@featherstonehigh.ealing.sch.uk



Office situated in the mentoring suite at the rear of the A block in the mentoring suite.

### For KS4 students:

**Emma Coutts, Learning Mentor  
Child Protection Officer for KS4**

**Ext:** 242

**E:** ecoutts@featherstonehigh.ealing.sch.uk



Office situated in the seclusion area at the rear of the A block in seclusion.

### For KS3 students:

**Tracey Simpson, Learning Mentor  
Child Protection Officer for KS3**

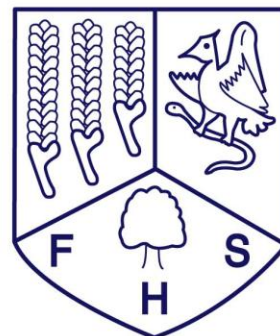
**Ext:** 259

**E:** tsimpson@featherstonehigh.ealing.sch.uk



Office situated in the KS3 LBSC

**If we have any concerns regarding the safeguarding or welfare of your child we will contact you.**





## School Times:

The school day starts at **08.20**. Lessons are **45 minutes/ 1hr 30 minutes** in duration. Tutorials are held each day.

## The Extended Day Structure:

|       |                | Year 7                                | Year 8 | Year 9   | Year 10   | Year 11  | Year 12       | Year 13  |  |  |
|-------|----------------|---------------------------------------|--------|----------|---|----------|---------------|--|--|--|
|       | 8.20 – 8.30am  | SMALL GROUP TUTORIAL                  |        |          |   |          |               | SMALL GROUP TUTORIAL   |  |  |
|       | 8.30- 8.45am   | REGISTRATION                          |        |          |   |          |               | REGISTER   |  |  |
| 1     | 8.45- 10.15am  | Periods 1 & 2                         |        |          | ONCE PER FORTNIGHT – THURSDAY WEEK A FOR YEAR 10<br>THURSDAY WEEK B FOR YEAR 11 |          | Periods 1 & 2 |  |  |  |
| 2     |                |                                       |        |          |   |          |               |  |  |  |
| Break | 10.15- 10.30am |                                       |        |          | Arrival   |          |               |  |  |  |
| 3     | 10.30- 12.00pm | Periods 3 & 4                         |        |          |   |          |               |  |  |  |
| 4     |                |                                       |        |          |   |          |               |  |  |  |
| 5     | 12.00- 12.45pm |                                       |        | Period 5 |   |          |               |  |  |  |
| 6     | 12.45- 1.30pm  | Period 6                              |        |          |   | Period 6 |               |  |  |  |
| 7     | 1.30- 2.15pm   | Period 7                              |        |          |   |          |               | Period 7   |  |  |
| 8     | 2.15- 3.00pm   | 30 minute Assembly once per fortnight |        |          | Periods 8 & 9   |          |               |  |  |  |
| 9     | 3.00- 3.45pm   |                                       |        |          |   |          |               |  |  |  |
|       | 3.45- 4.00pm   |                                       |        |          | REGISTRATION  |          |               |  |  |  |
| 10    | 4.00- 4.45pm   |                                       |        |          | SMALL GROUP TUTORIAL 4.00 – 4.15pm  |          |               | Periods 10 & 11 for enrichment and tutorial<br>30 minute Year 12 Assembly once per fortnight |  |  |
| 11    | 4.45- 5.30pm   |                                       |        |          |   |          |               |  |  |  |

## Assemblies:

Assemblies for each year group take place once per fortnight. All assemblies take place in the main hall unless you are advised of a change in the venue. As well as TLRs other staff will be assigned supervision duties for the duration of these assemblies.

Every week the following will be conveyed to tutors / teachers to deliver as part of our daily collective reflection programme:

1. The thought for the week
2. The news of the week
3. The value for the week.

## Assembly Rota

| Year 7        | Year 8        | Year 9        | Year 10        | Year 11        | Year 12        | Year 13         |
|---------------|---------------|---------------|----------------|----------------|----------------|-----------------|
| Fri           | Thu           | Tue           | Mon            | Mon            | Tue            | Mon             |
| B             | B             | B             | A              | A              | B              | A               |
| 2.15→<br>2.45 | 2.15→<br>2.45 | 2.15→<br>2.45 | 2.15 →<br>2.45 | 3.15 →<br>4.00 | 4.00 →<br>4.30 | 9.30 →<br>10.15 |

*Refer to Appendix for Assembly Supervision Duties*

## Duties for Monday Week A (updated 31/7/11)

| Morning 8.20 → 8.30am   |  |                          |                                  |
|---|--|--------------------------|----------------------------------|
| Outer Gate  | Inner Gate   | Playground A             | Playground B                     |
| Katy Reeves & Rachael Stribling   | Shaheen Butt & Claire Hayes  | Alan Crowe & Tim Hemming | Amy McNicholas & Theresa Nagaoka |
| Break 10.15 → 10.30/10.35am   |  |                          |                                  |
| Leader  | Gerry Wadwa  |                          |                                  |
| Outer Gate  | Kris Bolt, Mamta Jaitley, Elena Sanz & Joy Spreadbury  |                          |                                  |
| Inner Gate & bell   | Inder Kaur & Rachael Stribling   |                          |                                  |
| Playground A  | Alan Crowe, Nicola Magner & Rekha Sabharwal  |                          |                                  |
| Playground by B Block   | Claire Hayes, Tim Hemming & Shaun Wills  |                          |                                  |
| Clear B Block   | Alysha Rumbelow  |                          |                                  |
| Entrance to B Block   | Theresa Nagaoka & Lindsay Southworth   |                          |                                  |
| Library   | Bushra Begum   |                          |                                  |
| Entrance by Library   | Sam Whitehouse   |                          |                                  |
| Clear F corridor  | Katy Reeves  |                          |                                  |
| Student Services  | Laura Varley   |                          |                                  |
| Quadrangle  | Alice Janssens   |                          |                                  |
| Maths Stairs  | Rishi Thakur   |                          |                                  |
| Lunch Duties  |  |                          |                                  |
| LS1 12.00-12.45   | Nicola Meston, Joy Spreadbury, Kate Darroch & Inder Kaur (entrance to library at changeover) |                          |                                  |
| LS2 12.45 - 1.30  | Neil Bradford, Alan Bate & Kate Johnson (entrance to library at changeover)                  |                          |                                  |
| LS3 1.30 - 2.15   | Alka Patel, Kamal Thacker & Clare Muir (entrance to library at changeover)                   |                          |                                  |
| Early Afternoon Duty 2.15 → 2.30pm (Year teams to clear site prior to Year team TADM) |  |                          |                                  |
| Leader  | Nicola Meston  |                          |                                  |
| Patrol  | Katy Reeves, Rachael Stribling & Andrew Webb   |                          |                                  |
| Outer Gate  | Rekha Sabharwal & Kris Bolt  |                          |                                  |
| Inner Gate  | Claire Hayes & Inder Kaur  |                          |                                  |
| Clear Playground  | Tim Hemming & Shaheen Butt   |                          |                                  |
| Clear Main Building   | Nicola Magner  |                          |                                  |
| Clear B Block   | Elena Sanz   |                          |                                  |
| 6th form building   | Joy Spreadbury   |                          |                                  |
| Late Afternoon Duty 4.00 → 4.15pm   |  |                          |                                  |
| Leader  | Kamal Thacker  |                          |                                  |
| Patrol  | Nadia Habraszewski, Jenny Moses & Andrew Webb  |                          |                                  |
| Outer Gate  | Catherine Carey & Laura Varley   |                          |                                  |
| Inner Gate  | Tariq Abdullah & Amritpal Aujla  |                          |                                  |
| Clear Playground  | Krista Grant, Natalie Shepping, Annie Peart-Jackson  |                          |                                  |
| Clear Main Building   | Selina Akhtar  |                          |                                  |
| Clear B Block   | Reshma Patel   |                          |                                  |
| 6th form building   | Jon Elkon  |                          |                                  |

## Duties for Tuesday Week A (31/7/11)

| Morning 8.20 → 8.30am        |                                      |                                       |                               |
|------------------------------|--------------------------------------|---------------------------------------|-------------------------------|
| Outer Gate                   | Inner Gate                           | Playground A                          | Playground B                  |
| Katy Reeves & Joy Spreadbury | Shaheen Butt & <i>Gurnaik Sangha</i> | Rekha Sabharwal & Thurka Jeyachandran | Amy Caulfield & Shefali Varma |

| Break 10.15 → 10.30/10.35am |   |
|-----------------------------|---|
| Leader                      | Kamal Thacker   |
| Outer Gate                  | Catherine Carey, Jenny Moses & Karl Palmer                |
| Inner Gate & bell           | Nicola Magner & Joseph Coulter                            |
| Playground A                | James Mutton, Gurnaik Sangha, Binny Sharma & Melissa West |
| Playground by B Block       | Shelley Eastwick, Emma Harvey, Magdalena Krohn            |
| Clear B Block               | Amrita Ahluwalia  |
| Entrance to B Block         | Denise Galstaun   |
| Library                     | Alice Janssens  |
| Entrance by Library         | Sarah Hurlstone & Beth Walters                            |
| Clear F corridor            | Amit Kochhar & Rishi Thakur                               |
| Student Services            | Vanisha Sharma  |
| Quadrangle                  | Rebecca Perks   |
| Maths Stairs                | Jon Elkon   |

| Lunch Duties     |  |
|------------------|--|
| LS1 12.00-12.45  | Alison Lusuardi, Sapuran Gill, John Andrews & Inder Kaur (entrance to library at changeover) |
| LS2 12.45 - 1.30 | Kate Johnson, Jenny Moses & Rekha Sabharwal (entrance to library at changeover)              |
| LS3 1.30 - 2.15  | Nicola Meston, Nadia Habraszewski & Laura Varley (entrance to library at changeover)         |

| Early Afternoon Duty 2.15 → 2.30pm |  |
|------------------------------------|--|
| Leader                             | Alan Bate  |
| Patrol                             | <i>Amritpal Aujla</i> , Elena Sanz & Alan Bate     |
| Outer Gate                         | Keith Patterson & Krista Grant                     |
| Inner Gate                         | Paul Nwaolise, Samira Osmane & <i>James Mutton</i> |
| Clear Playground                   | Sunil Patnaik, Sarah MacDonald & Alice Janssens    |
| Clear Main Building                | Melissa West                                       |
| Clear B Block                      | Theresa Nagaoka                                    |
| 6th form building                  | Anna Price   |

| Late Afternoon Duty 4.00 → 4.15pm |  |
|-----------------------------------|--|
| Leader                            | John Noel                                  |
| Patrol                            | Mehana Semar, Laura Varley & Marc Williams |
| Outer Gate                        | John Noel & Catherine Toms                 |
| Inner Gate                        | Richard Holden                             |
| Clear Playground                  | Sukhi Bharj, John Casey & Natalie Shepping |
| Clear Main Building               | Shiri Gill                                 |
| Clear B Block                     | John Andrews                               |
| 6th form building                 | Sanya Ludlow                               |

## Duties for Wednesday Week A (updated 31/7/11)

| Morning 8.20 → 8.30am   |   |                                |                                  |
|---|---|--------------------------------|----------------------------------|
| Outer Gate  | Inner Gate  | Playground A                   | Playground B                     |
| Alan Crowe<br>& Karl Palmer                                     | Sarah Hurlstone<br>& Tariq Embaye   | Duncan White<br>& Sarah Horton | John Casey<br>& Shelley Eastwick |
| Break 10.15 → 10.30/10.35am                                     |   |                                |                                  |
| Leader  | Nicola Meston   |                                |                                  |
| Outer Gate  | Elena Sanz, Clare Muir & John Andrews   |                                |                                  |
| Inner Gate & bell   | Richard Holden & Chris Briggs   |                                |                                  |
| Playground A  | Annie Peart-Jackson, Amy Caulfield & Amy MacLean  |                                |                                  |
| Playground by B Block   | Alysha Rumbelow, Patrick Dawkins & Emma Harvey  |                                |                                  |
| Clear B Block   | Kate Darroch  |                                |                                  |
| Entrance to B Block   | Franck Marceteau & Sarah Turner   |                                |                                  |
| Library   | Jag Kumar   |                                |                                  |
| Entrance by Library   | Robyn Seward & Sunil Patnaik  |                                |                                  |
| Clear F corridor  | Tariq Embaye  |                                |                                  |
| Student Services  | Binny Sharma & Shefali Varma  |                                |                                  |
| Quadrangle  | Sarah MacDonald   |                                |                                  |
| Maths Stairs  | Samira Osmane   |                                |                                  |
| Lunch Duties  |   |                                |                                  |
| LS1 12.00-12.45   | Alison Lusuardi, Claire Hayes, John Casey & Rachael Stribling (entrance to library at changeover) |                                |                                  |
| LS2 12.45 - 1.30  | Alan Bate, John Noel, Elena Sanz & Jenny Moses (entrance to library at changeover)                |                                |                                  |
| LS3 1.30 - 2.15   | Nicola Meston, Alka Patel & Nadia Habraszewski (entrance to library at change over)               |                                |                                  |
| Early Afternoon Duty 2.15 → 2.30pm                              |   |                                |                                  |
| Leader  | Sapuran Gill  |                                |                                  |
| Patrol  | Sapuran Gill, Elena Sanz & Karl Palmer  |                                |                                  |
| Outer Gate  | Keith Patterson & Amy McNicholas  |                                |                                  |
| Inner Gate  | Alice Janssens & Susan Wormersley   |                                |                                  |
| Clear Playground  | Sarah Turner & Sarah Bowles   |                                |                                  |
| Clear Main Building   | Shefali Varma   |                                |                                  |
| Clear B Block   | Theresa Nagaoka   |                                |                                  |
| 6th form building   | Patrick Dawkins   |                                |                                  |
| Late Afternoon Duty 4.00 → 4.15pm (prior to whole school INSET) |   |                                |                                  |
| Leader  | Gerry Wadwa   |                                |                                  |
| Patrol  | Gerry Wadwa, Mamta Jaitley & Clare Muir   |                                |                                  |
| Outer Gate  | Paul Middleton & Robyn Seward   |                                |                                  |
| Inner Gate  | Annie Peart-Jackson & David Walters   |                                |                                  |
| Clear Playground  | Alysha Rumbelow & Axel Fouabi   |                                |                                  |
| Clear Main Building   | Nicola Magner   |                                |                                  |
| Clear B Block   | Catherine Toms  |                                |                                  |
| 6th form building   | Anna Price  |                                |                                  |

## Duties for Thursday Week A (updated 31/7/11)

| Morning 8.20 → 8.30am              |  |                              |                                  |
|------------------------------------|--|------------------------------|----------------------------------|
| Outer Gate                         | Inner Gate   | Playground A                 | Playground B                     |
| Kris Bolt & Nicola Magner          | Amy McNicholas & Shaun Wills   | Katherine Mee & Beth Walters | James Mutton & Zachary Rawlinson |
| Break 10.15 → 10.30/10.35am        |  |                              |                                  |
| Leader                             | Alka Patel   |                              |                                  |
| Outer Gate                         | Marc Williams, Nadia Habraszewski & Mamta Jaitley                                |                              |                                  |
| Inner Gate & bell                  | Nicola Magner & Joseph Coulter   |                              |                                  |
| Playground A                       | Keith Patterson, Krista Grant & Paul Nwaolise                                    |                              |                                  |
| Playground by B Block              | Mehana Semar, Zachary Rawlinson & Tariq Abdullah                                 |                              |                                  |
| Clear B Block                      | Patrick Dawkins  |                              |                                  |
| Entrance to B Block                | Shaun Wills  |                              |                                  |
| Library                            | Zainab Maniar & Natalie Shepping   |                              |                                  |
| Entrance by Library                | Amy McNicholas & David Walters   |                              |                                  |
| Clear F corridor                   | Reshma Patel   |                              |                                  |
| Student Services                   | Shiri Gill & Susan Wormersley  |                              |                                  |
| Quadrangle                         | Rishi Thakur   |                              |                                  |
| Maths Stairs                       | Wajeedah Bhunnoo   |                              |                                  |
| Lunch Duties                       |  |                              |                                  |
| LS1 12.00-12.45                    | Sapuran Gill, Claire Hayes, Rachael Sribling (entrance to library at changeover) |                              |                                  |
| LS2 12.45 - 1.30                   | Alex McGhee, Jenny Moses, Catherine Carey (entrance to library at changeover)    |                              |                                  |
| LS3 1.30 - 2.15                    | Marc Williams, Laura Varley, Mamta Jaitley (entrance to library at changeover)   |                              |                                  |
| Early Afternoon Duty 2.15 → 2.30pm |  |                              |                                  |
| Leader                             | Neil Bradford  |                              |                                  |
| Patrol                             | Kris Bolt, Shaheen Butt & Rachael Stribling                                      |                              |                                  |
| Outer Gate                         | Inder Kaur & Neil Bradford   |                              |                                  |
| Inner Gate                         | Patrick Dawkins & Lindsay Southworth   |                              |                                  |
| Clear Playground                   | Tarik Embaye, Amit Kochhar & Paul Nwaolise                                       |                              |                                  |
| Clear Main Building                | Duncan White & Elena Samson  |                              |                                  |
| Clear B Block                      | Sam Whitehouse   |                              |                                  |
| 6th form building                  | Anna Price   |                              |                                  |
| Late Afternoon Duty 4.00 → 4.15pm  |  |                              |                                  |
| Leader                             | Kate Johnson   |                              |                                  |
| Patrol                             | Joy Spreadbury, Andrew Webb & Alex McGhee  |                              |                                  |
| Outer Gate                         | Jon Elkon & John Andrews   |                              |                                  |
| Inner Gate                         | Bushra Begum & Rebecca Perks   |                              |                                  |
| Clear Playground                   | Nadia Habraszewski   |                              |                                  |
| Clear Main Building                | Samira Osmane  |                              |                                  |
| Clear B Block                      | Rekha Sabharwal  |                              |                                  |
| 6th form building                  | Mamta Jaitley  |                              |                                  |



## Duties for Friday Week A (updated 31/7/11)

| Morning 8.20 → 8.30am              |  |                                       |                                      |
|------------------------------------|--|---------------------------------------|--------------------------------------|
| Outer Gate                         | Inner Gate   | Playground A                          | Playground B                         |
| Inder Kaur & Rachael Stribling     | John Andrews & Binny Sharma  | Thurka Jeyachandran & Theresa Nagaoka | Lindsay Southworth & Magdalena Krohn |
| Break 10.15 → 10.30/10.35am        |  |                                       |                                      |
| Leader                             | Alison Lusuardi  |                                       |                                      |
| Outer Gate                         | Marc Williams, Claire Hayes & Laura Varley   |                                       |                                      |
| Inner Gate & bell                  | John Andrews & Amritpal Aujla  |                                       |                                      |
| Playground A                       | Alan Crowe, Richard Holden & Binny Sharma  |                                       |                                      |
| Playground by B Block              | Franck Marceteau, Sarah Horton & Katherine Mee   |                                       |                                      |
| Clear B Block                      | Selina Akhtar & Samira Osmane  |                                       |                                      |
| Entrance to B Block                | Sukhi Bharj & Sarah Turner   |                                       |                                      |
| Library                            | Sarah Bowles   |                                       |                                      |
| Entrance by Library                | Sunil Patnaik & Susan Wormersley   |                                       |                                      |
| Clear F corridor                   | Duncan White   |                                       |                                      |
| Student Services                   | Rebecca Perks  |                                       |                                      |
| Quadrangle                         | Sarah MacDonald  |                                       |                                      |
| Maths Stairs                       | Sanya Ludlow   |                                       |                                      |
| Lunch Duties                       |  |                                       |                                      |
| LS1 12.00-12.45                    | Katy Reeves, Inder Kaur & Nicola Magner (entrance to library at changeover)                      |                                       |                                      |
| LS2 12.45 - 1.30                   | Kate Johnson, Alex McGhee, Rekha Sabharwal & Catherine Carey (entrance to library at changeover) |                                       |                                      |
| LS3 1.30 - 2.15                    | John Noel, Kamal Thacker & Clare Muir (entrance to library at changeover)                        |                                       |                                      |
| Early Afternoon Duty 2.15 → 2.30pm |  |                                       |                                      |
| Leader                             | Alison Lusuardi  |                                       |                                      |
| Patrol                             | Alison Lusuardi, Kris Bolt & Emma Harvey   |                                       |                                      |
| Outer Gate                         | Krista Grant & Denise Galstaun   |                                       |                                      |
| Inner Gate                         | James Mutton & Amrita Ahluwalia  |                                       |                                      |
| Clear Playground                   | Shefali Varma & Rishi Thakur   |                                       |                                      |
| Clear Main Building                | Sam Whitehouse & Zachary Rawlinson   |                                       |                                      |
| Clear B Block                      | Shelley Eastwick   |                                       |                                      |
| 6th form building                  | Elena Samson   |                                       |                                      |
| Late Afternoon Duty 4.00 → 4.15pm  |  |                                       |                                      |
| Leader                             | Alka Patel   |                                       |                                      |
| Patrol                             | Clare Muir, Marc Williams & Nadia Habraszewski   |                                       |                                      |
| Outer Gate                         | Amy MacLean & Mehana Semar   |                                       |                                      |
| Inner Gate                         | Vanisha Sharma & Magdalena Krohn   |                                       |                                      |
| Clear Playground                   | Joseph Coulter & Franck Marceteau  |                                       |                                      |
| Clear Main Building                | Reshma Patel   |                                       |                                      |
| Clear B Block                      | Selina Akhtar  |                                       |                                      |
| 6th form building                  | David Walters  |                                       |                                      |

## Duties for Monday Week B (updated 31/7/11)

| Morning 8.20 → 8.30am      |                              |                              |                                  |
|----------------------------|------------------------------|------------------------------|----------------------------------|
| Outer Gate                 | Inner Gate                   | Playground A                 | Playground B                     |
| Inder Kaur & Nicola Magner | Duncan White & Paul Nwaolise | Amy Caulfield & Melissa West | Katherine Mee & Shelley Eastwick |

| Break 10.15 → 10.30/10.35am |   |
|-----------------------------|---|
| Leader                      | John Noel   |
| Outer Gate                  | Kris Bolt, Joy Spreadbury & Rachael Stribling             |
| Inner Gate & bell           | Laura Varley & Alex McGhee                                |
| Playground A                | Amy Caulfield, Karl Palmer, Richard Holden & James Mutton |
| Playground by B Block       | Magdalena Krohn, Catherine Toms & Chris Briggs            |
| Clear B Block               | Selina Akhtar   |
| Entrance to B Block         | Sukhi Bharj   |
| Library                     | Bushra Begum  |
| Entrance by Library         | Jag Kumar & Amy McNicholas                                |
| Clear F corridor            | Mehana Semar  |
| Student Services            | Sarah Hurlstone & Vanisha Sharma                          |
| Quadrangle                  | Alice Janssens  |
| Maths Stairs                | Wajeelah Bhunnoo  |

| Lunch Duties     |   |
|------------------|---|
| LS1 12.00-12.45  | Katy Reeves, Kris Bolt, Alice Janssens & Joy Spreadbury (entrance to library at changeover) |
| LS2 12.45 - 1.30 | Alan Bate, Shaheen Butt, Tim Hemming & Jenny Moses (entrance to library at changeover)      |
| LS3 1.30 - 2.15  | Kamal Thacker, Andrew Webb & Marc Williams (entrance to library at changeover)              |

| Early Afternoon Duty 2.15 → 2.30pm |   |
|------------------------------------|---|
| Leader                             | Alan Bate                                       |
| Patrol                             | Inder Kaur, Katy Reeves & Alan Bate             |
| Outer Gate                         | Rekha Sabharwal & Lindsay Southworth            |
| Inner Gate                         | Alysha Rumbelow, Sarah Horton & Theresa Nagaoka |
| Clear Playground                   | Katherine Mee, Sunil Patnaik & Duncan White     |
| Clear Main Building                | Sarah Hurlstone                                 |
| Clear B Block                      | Kate Darroch                                    |
| 6th form building                  | Rachael Stribling                               |

| Late Afternoon Duty 4.00 → 4.15pm |   |
|-----------------------------------|---|
| Leader                            | Gerry Wadwa                               |
| Patrol                            | Alex McGhee, Joy Spreadbury & Andrew Webb |
| Outer Gate                        | Gerry Wadwa & Paul Middleton              |
| Inner Gate                        | Catherine Carey & Axel Fouabi             |
| Clear Playground                  | Shiri Gill & Amritpal Aujla               |
| Clear Main Building               | Rebecca Perks                             |
| Clear B Block                     | Alysha Rumbelow                           |
| 6th form building                 | David Walters                             |

## Duties for Tuesday Week B (updated 31/7/11)

| Morning 8.20 → 8.30am              |   |                                 |                                 |
|------------------------------------|---|---------------------------------|---------------------------------|
| Outer Gate                         | Inner Gate  | Playground A                    | Playground B                    |
| Elena Sanz & Claire Hayes          | Rekha Sabharwal & Karl Palmer   | Shefali Varma & Patrick Dawkins | Wajeehah Bhunnoo & Amit Kochhar |
| Break 10.15 → 10.30/10.35am        |   |                                 |                                 |
| Leader                             | Sapuran Gill  |                                 |                                 |
| Outer Gate                         | Shaheen Butt, Jenny Moses, Karl Palmer  |                                 |                                 |
| Inner Gate & bell                  | Paul Middleton  |                                 |                                 |
| Playground A                       | John Casey, Keith Patterson & Gurnaik Sangha  |                                 |                                 |
| Playground by B Block              | Amrita Ahluwalia, Kate Darroch, Denise Galstaun & Katherine Mee                       |                                 |                                 |
| Clear B Block                      | Sarah Bowles  |                                 |                                 |
| Entrance to B Block                | Franck Marceteau  |                                 |                                 |
| Library                            | Natalie Shepping  |                                 |                                 |
| Entrance by Library                | Robyn Seward  |                                 |                                 |
| Clear F corridor                   | Thurka Jeyachandran   |                                 |                                 |
| Student Services                   | Melissa West & Beth Walters   |                                 |                                 |
| Quadrangle                         | Rebecca Perks   |                                 |                                 |
| Maths Stairs                       | Zachary Rawlinson   |                                 |                                 |
| Lunch Duties                       |   |                                 |                                 |
| LS1 12.00-12.45                    | Sapuran Gill, Alison Lusuardi & Rachael Stribling (entrance to library at changeover) |                                 |                                 |
| LS2 12.45 - 1.30                   | John Noel, Shaheen Butt & Catherine Carey (entrance to library at changeover)         |                                 |                                 |
| LS3 1.30 - 2.15                    | Alka Patel, John Casey & Nadia Habraszewski (entrance to library at changeover)       |                                 |                                 |
| Early Afternoon Duty 2.15 → 2.30pm |   |                                 |                                 |
| Leader                             | Alison Lusuardi   |                                 |                                 |
| Patrol                             | Alison Lusuardi, Joy Spreadbury & Mamta Jaitley                                       |                                 |                                 |
| Outer Gate                         | Chris Briggs & Denise Galstaun  |                                 |                                 |
| Inner Gate                         | Rishi Thakur & John Casey   |                                 |                                 |
| Clear Playground                   | Jag Kumar & Sarah MacDonald   |                                 |                                 |
| Clear Main Building                | Susan Wormersley  |                                 |                                 |
| Clear B Block                      | Kate Darroch  |                                 |                                 |
| 6th form building                  | Tim Hemming   |                                 |                                 |
| Late Afternoon Duty 4.00 → 4.15pm  |   |                                 |                                 |
| Leader                             | Kamal Thacker   |                                 |                                 |
| Patrol                             | Marc Williams, Jenny Moses & Alex McGhee  |                                 |                                 |
| Outer Gate                         | Kamal Thacker & Andrew Webb   |                                 |                                 |
| Inner Gate                         | Robyn Seward  |                                 |                                 |
| Clear Playground                   | Shiri Gill & Bushra Begum   |                                 |                                 |
| Clear Main Building                | Nadia Habraszewski  |                                 |                                 |
| Clear B Block                      | Sukhi Bharj   |                                 |                                 |
| 6th form building                  | Vanisha Sharma  |                                 |                                 |

## Duties for Wednesday Week B (updated 31/7/11)

| Morning 8.20 → 8.30am              |   |                            |                                |
|------------------------------------|---|----------------------------|--------------------------------|
| Outer Gate                         | Inner Gate  | Playground A               | Playground B                   |
| Claire Hayes & Sarah Hurlstone     | John Casey & Chris Briggs   | Alan Crowe & Sunil Patnaik | Sarah MacDonald & Tarik Embaye |
| Break 10.15 → 10.30/10.35am        |   |                            |                                |
| Leader                             | Alan Bate   |                            |                                |
| Outer Gate                         | Andrew Webb, Shaheen Butt & Mamta Jaitley   |                            |                                |
| Inner Gate & bell                  | Rekha Sabharwal & Nadia Habraszewski  |                            |                                |
| Playground A                       | Mehana Semar, Shiri Gill & Sunil Patnaik  |                            |                                |
| Playground by B Block              | Annie Peart-Jackson, Emma Harvey & Catherine Toms   |                            |                                |
| Clear B Block                      | Sukhi Bharj & Sarah Turner  |                            |                                |
| Entrance to B Block                | Sarah Bowles  |                            |                                |
| Library                            | Bushra Begum  |                            |                                |
| Entrance by Library                | Jag Kumar & Susan Wormersley  |                            |                                |
| Clear F corridor                   | Tarik Embaye & Elena Samson   |                            |                                |
| Student Services                   | Amy MacLean & Samira Osmane   |                            |                                |
| Quadrangle                         | Zainab Maniar   |                            |                                |
| Maths Stairs                       | Amit Kochhar & Jon Elkon  |                            |                                |
| Lunch Duties                       |   |                            |                                |
| LS1 12.00-12.45                    | Sapuran Gill, Katy Reeves, Sarah Turner & Nicola Magner (entrance to library at changeover) |                            |                                |
| LS2 12.45 - 1.30                   | Kate Johnson, Shaheen Butt, John Casey & Alex McGhee (entrance to library at changeover)    |                            |                                |
| LS3 1.30 - 2.15                    | Alka Patel, Clare Muir & Laura Varley (entrance to library at changeover)                   |                            |                                |
| Early Afternoon Duty 2.15 → 2.30pm |   |                            |                                |
| Leader                             | Sapuran Gill  |                            |                                |
| Patrol                             | Catherine Carey, Elena Sanz & Denise Galstaun   |                            |                                |
| Outer Gate                         | Krista Grant & Tim Hemming  |                            |                                |
| Inner Gate                         | Emma Harvey & Elena Samson  |                            |                                |
| Clear Playground                   | Gurnaik Sangha, Rishi Thakur & Franck Marceteau   |                            |                                |
| Clear Main Building                | Thurka Jeyachandran   |                            |                                |
| Clear B Block                      | Amrita Ahluwalia  |                            |                                |
| 6th form building                  | Sarah Bowles  |                            |                                |
| Late Afternoon Duty 4.00 → 4.15pm  |   |                            |                                |
| Leader                             | John Noel   |                            |                                |
| Patrol                             | John Noel, Jenny Moses & Mehana Semar   |                            |                                |
| Outer Gate                         | Alysha Rumbelow & Reshma Patel  |                            |                                |
| Inner Gate                         | David Walters   |                            |                                |
| Clear Playground                   | Natalie Shepping & Selina Akhtar  |                            |                                |
| Clear Main Building                | Shiri Gill  |                            |                                |
| Clear B Block                      | Magdalena Krohn   |                            |                                |
| 6th form building                  | Axel Fouabi   |                            |                                |

## Duties for Thursday Week B (updated 31/7/11)

| Morning 8.20 → 8.30am              |  |                            |                               |
|------------------------------------|--|----------------------------|-------------------------------|
| Outer Gate                         | Inner Gate   | Playground A               | Playground B                  |
| Kris Bolt & Amritpal Aujla         | Patrick Dawkins & Jag Kumar  | Shaun Wills & Melissa West | Sarah Horton & Sam Whitehouse |
| Break 10.15 → 10.30/10.35am        |  |                            |                               |
| Leader                             | Kate Johnson   |                            |                               |
| Outer Gate                         | Clare Muir, Claire Hayes & Alex McGhee   |                            |                               |
| Inner Gate & bell                  | Joseph Coulter & John Andrews  |                            |                               |
| Playground A                       | Jon Elkon, Richard Holden & Keith Patterson  |                            |                               |
| Playground by B Block              | Amrita Ahulwalia, Annie Peart-Jackson & Melissa West   |                            |                               |
| Clear B Block                      | Catherine Toms   |                            |                               |
| Entrance to B Block                | Paul Middleton   |                            |                               |
| Library                            | Anna Price & Shefali Varma   |                            |                               |
| Entrance by Library                | Robyn Seward & Elena Samson  |                            |                               |
| Clear F corridor                   | Zainab Maniar & Tariq Abdullah   |                            |                               |
| Student Services                   | Reshma Patel   |                            |                               |
| Quadrangle                         | Rebecca Perks  |                            |                               |
| Maths Stairs                       | Krista Grant   |                            |                               |
| Lunch Duties                       |  |                            |                               |
| LS1 12.00-12.45                    | Alison Lusuardi, Nicola Meston, Kate Darroch & Rachael Stribling (entrance to library at changeover) |                            |                               |
| LS2 12.45 - 1.30                   | Elena Sanz, Catherine Carey, Patrick Dawkins & Rekha Sabharwal (entrance to library at changeover)   |                            |                               |
| LS3 1.30 - 2.15                    | Kamal Thacker, Marc Williams & Mamta Jaitley (entrance to library at changeover)                     |                            |                               |
| Early Afternoon Duty 2.15 → 2.30pm |  |                            |                               |
| Leader                             | Nicola Meston  |                            |                               |
| Patrol                             | Nicola Meston, Shaheen Butt & Katy Reeves  |                            |                               |
| Outer Gate                         | Amy McNicholas & Tariq Abdullah  |                            |                               |
| Inner Gate                         | Katherine Mee & <i>James Mutton</i>  |                            |                               |
| Clear Playground                   | Shelley Eastwick & Alice Janssens  |                            |                               |
| Clear Main Building                | Thurka Jeyachandran & Samira Osmane  |                            |                               |
| Clear B Block                      | Sarah Turner & Denise Galstaun   |                            |                               |
| 6th form building                  | <i>Amit Kochhar</i>  |                            |                               |
| Late Afternoon Duty 4.00 → 4.15pm  |  |                            |                               |
| Leader                             | Kate Johnson   |                            |                               |
| Patrol                             | Clare Muir, Alex McGhee & <i>Jon Elkon</i>   |                            |                               |
| Outer Gate                         | Kate Johnson & Sanya Ludlow  |                            |                               |
| Inner Gate                         | Paul Middleton & John Casey  |                            |                               |
| Clear Playground                   | Catherine Toms & Natalie Shepping  |                            |                               |
| Clear Main Building                | Richard Holden & <i>Susan Womersley</i>  |                            |                               |
| Clear B Block                      | Catherine Carey  |                            |                               |
| 6th form building                  | Joseph Coulter   |                            |                               |

## Duties for Friday Week B (updated 31/7/11)

| Morning 8.20 → 8.30am              |   |                                  |                              |
|------------------------------------|---|----------------------------------|------------------------------|
| Outer Gate                         | Inner Gate  | Playground A                     | Playground B                 |
| Katy Reeves & Binny Sharma         | Patrick Dawkins, Alan Crowe & Kate Darroch  | Zachary Rawlinson & Sarah Horton | Anna Price & Magdalena Krohn |
| Break 10.15 → 10.30/10.35am        |   |                                  |                              |
| Leader                             | Neil Bradford   |                                  |                              |
| Outer Gate                         | Marc Williams, Clare Muir & Jenny Moses   |                                  |                              |
| Inner Gate & bell                  | Inder Kaur & Tim Hemming  |                                  |                              |
| Playground A                       | Amit Kochhar, Keith Patterson & Lindsay Southworth  |                                  |                              |
| Playground by B Block              | Amrita Ahluwalia, Sarah Turner & Selina Akhtar  |                                  |                              |
| Clear B Block                      | Sarah Horton & Shelley Eastwick   |                                  |                              |
| Entrance to B Block                | Kate Darroch  |                                  |                              |
| Library                            | Binny Sharma  |                                  |                              |
| Entrance by Library                | Sam Whitehouse  |                                  |                              |
| Clear F corridor                   | Thurka Jeyachandran   |                                  |                              |
| Student Services                   | David Walters & Zachary Rawlinson   |                                  |                              |
| Quadrangle                         | Vanisha Sharma  |                                  |                              |
| Maths Stairs                       | Paul Nwaolise   |                                  |                              |
| Lunch Duties                       |   |                                  |                              |
| LS1 12.00-12.45                    | Katy Reeves, Inder Kaur, Sukhi Bharj & Joy Spreadbury (entrance to library at changeover) |                                  |                              |
| LS2 12.45 - 1.30                   | Neil Bradford, Alan Bate & John Noel (entrance to library at changeover)                  |                                  |                              |
| LS3 1.30 - 2.15                    | Clare Muir, Marc Williams & Nadia Habraszewski (entrance to library at changeover)        |                                  |                              |
| Early Afternoon Duty 2.15 → 2.30pm |   |                                  |                              |
| Leader                             | Neil Bradford   |                                  |                              |
| Patrol                             | Neil Bradford, Mamta Jaitley & Lindsay Southworth   |                                  |                              |
| Outer Gate                         | Sarah Bowles & Beth Walters   |                                  |                              |
| Inner Gate                         | Elena Samson & Jag Kumar  |                                  |                              |
| Clear Playground                   | Tarik Embaye & Franck Marceteau   |                                  |                              |
| Clear Main Building                | Paul Nwaolise   |                                  |                              |
| Clear B Block                      | Emma Harvey   |                                  |                              |
| 6th form building                  | Anna Price  |                                  |                              |
| Late Afternoon Duty 4.00 → 4.15pm  |   |                                  |                              |
| Leader                             | Alka Patel  |                                  |                              |
| Patrol                             | Alka Patel, Laura Varley & Catherine Carey  |                                  |                              |
| Outer Gate                         | Joseph Coulter & Vanisha Sharma   |                                  |                              |
| Inner Gate                         | Richard Holden & Amy MacLean  |                                  |                              |
| Clear Playground                   | Robyn Seward & Tariq Abdullah   |                                  |                              |
| Clear Main Building                | Reshma Patel  |                                  |                              |
| Clear B Block                      | Annie Peart-Jackson   |                                  |                              |
| 6th form building                  | Sanya Ludlow  |                                  |                              |

Notes: Duty leaders may alter the daily duty schedules



## Roles and Responsibilities for Lunch Duties

| Week A                      | Monday  | Tuesday   | Wednesday  | Thursday  | Friday  |
|-----------------------------|---|---|--|---|---|
| <b>LS1</b><br>12.00→12.45pm | (A) Nicola Meston<br>(B) Joy Spreadbury<br>(C) Kate Darroch<br>(D) Inder Kaur     | (A) Alison Lusuardi<br>(B) Sapuran Gill<br>(C) John Andrews<br>(D) Inder Kaur         | (A) Alison Lusuardi<br>(B) Claire Hayes<br>(C) John Casey<br>(D) Rachael Stribling | (A) Sapuran Gill<br>(B) Claire Hayes<br>(C) Rachael Stribling<br>(D)          | (A) Katy Reeves<br>(B) Inder Kaur<br>(C) Nicola Magner<br>(D)                     |
| <b>LS2</b><br>12.45→1.30pm  | (A) Neil Bradford<br>(B) Alan Bate<br>(C) Annie Peart-Jackson<br>(D) Kate Johnson | (A) Kate Johnson<br>(B) Annie Peart-Jackson<br>(C) Jenny Moses<br>(D) Rekha Sabharwal | (A) Alan Bate<br>(B) John Noel<br>(C) Elena Sanz<br>(D) Jenny Moses                | (A) Alex McGhee<br>(B) Jenny Moses<br>(C) Sarah Horton<br>(D) Catherine Carey | (A) Kate Johnson<br>(B) Alex McGhee<br>(C) Rekha Sabharwal<br>(D) Catherine Carey |
| <b>LS3</b><br>1.30→2.15pm   | (A) Alka Patel<br>(B) Kamal Thacker<br>(C) Clare Muir                             | (A) Nicola Meston<br>(B) Nadia Habraszewski<br>(C) Laura Varley                       | (A) Nicola Meston<br>(B) Alka Patel<br>(C) Nadia Habraszewski                      | (A) Marc Williams<br>(B) Laura Varley<br>(C) Mamta Jaitley                    | (A) Kamal Thacker<br>(B) John Noel<br>(C) Clare Muir                              |

| Week B                      | Monday   | Tuesday   | Wednesday  | Thursday  | Friday   |
|-----------------------------|--|---|--|---|--|
| <b>LS1</b><br>12.00→12.45pm | (A) Katy Reeves<br>(B) Kris Bolt<br>(C) Alice Janssens<br>(D) Joy Spreadbury | (A) Sapuran Gill<br>(B) Alison Lusuardi<br>(C) Rachael Stribling<br>(D)             | (A) Sapuran Gill<br>(B) Katy Reeves<br>(C) Sarah Turner<br>(D) Nicola Magner | (A) Alison Lusuardi<br>(B) Nicola Meston<br>(C) Kate Darroch<br>(D) Rachael Stribling | (A) Katy Reeves<br>(B) Inder Kaur<br>(C) Sukhi Bharj<br>(D) Joy Spreadbury     |
| <b>LS2</b><br>12.45→1.30pm  | (A) Alan Bate<br>(B) Shaheen Butt<br>(C) Tim Hemming<br>(D) Jenny Moses      | (A) John Noel<br>(B) Shaheen Butt<br>(C) Annie Peart-Jackson<br>(D) Catherine Carey | (A) Kate Johnson<br>(B) Shaheen Butt<br>(C) John Casey<br>(D) Alex McGhee    | (A) Elena Sanz<br>(B) Catherine Carey<br>(C) Patrick Dawkins<br>(D) Rekha Sabharwal   | (A) Neil Bradford<br>(B) Alan Bate<br>(C) Annie Peart-Jackson<br>(D) John Noel |
| <b>LS3</b><br>1.30→2.15pm   | (A) Kamal Thacker<br>(B) Andrew Webb<br>(C) Marc Williams                    | (A) Alka Patel<br>(B) John Casey<br>(C) Nadia Habraszewski                          | (A) Alka Patel<br>(B) Clare Muir<br>(C) Laura Varley                         | (A) Kamal Thacker<br>(B) Marc Williams<br>(C) Mamta Jaitley                           | (A) Clare Muir<br>(B) Marc Williams<br>(C) Nadia Habraszewski                  |

| Staff    | LS1  | LS2   | LS3   |
|----------|--|---|---|
| <b>A</b> | To supervise Year 8 pupils lining up by the door near the Dining Hall. Then to remain in the Dining hall until 12.30pm. Thereafter to patrol the playground. 5 minutes prior to the bell – to stand by the doors to the B block.   | To supervise Year 9 pupils lining up by the door near the stage. Then to remain in the main hall until 1.15pm. Thereafter to patrol the playground. 5 minutes prior to the bell – to stand by the doors to the Maths area.  | To supervise the entry of Year 11 pupils lining up by the door near the Dining Hall. Thereafter to remain in the dining hall until the majority of pupils have left for the playground. Transfer to the playground by 2.00pm. 5 minutes prior to the bell – to assist staff C (or B on Fridays) to ensure the orderly movement of pupils through the music / library corridor                           |
| <b>B</b> | To supervise Year 7 pupils lining up by the door near the stage. Then to remain in the Main hall until 12.30pm. Thereafter to patrol the playground. 5 minutes prior to the bell – to stand by the doors to the Maths area   | To supervise Year 10 pupils lining up by the door near the Dining Hall. Then to remain in the Dining hall until 1.15pm. Thereafter to patrol the playground. 5 minutes prior to the bell – to stand by the doors to the B block   | To stand by the line of Year 11 pupils ensuring an orderly entry of pupils until 1.45. Thereafter to patrol the playground. On Friday, staff B is to transfer to the music / library corridor in the last 5 minutes of the break to ensure the orderly movement of pupils through that corridor. On other days, staff B is to stand by the doors to the Maths area for the last 5 minutes of the break. |
| <b>C</b> | To stand by the door to the music / library corridor for the first and last 5 minutes of the lunch break. From 12.05/12.10 to stand outside the hall to help maintain orderly lines of pupils as they enter the hall and dining hall. From 12.20pm to patrol the playground. | To stand by the door to the music / library corridor for the first and last 5 minutes of the lunch break. From 12.50/12.55 to stand outside the hall to help maintain orderly lines of pupils as they enter the hall and dining hall. From 1.10pm to patrol the playground. | To stand by the door to the music / library corridor for the first and last 5 minutes of the lunch break. At all other times to patrol the playground.  |
| <b>D</b> | To stand by the door to the music / library corridor for the first and last 5 minutes of the lunch break At all other times to patrol the playground   | To stand by the door to the music / library corridor for the first and last 5 minutes of the lunch break At all other times to patrol the playground  |   |

- Member of staff denoted in bold is in charge of the lunch duty and end of lunch time

All staff on duty are required to clear the playground of pupils at the end of the lunch break

SMT on call are to assist staff C and D at the beginning

# DIRECTED TIME FOR TEACHERS WITHOUT RESPONSIBILITIES (1265 HOURS)

|   | TEACHING AND DUTIES<br>(within normal school cycle)  | HOURS     | TOTAL |
|---|--|-----------|-------|
| 1.  | <b>Teaching and timetabled duties</b> (up to 56 periods per fortnight) including rare cover for colleagues where the absence is unforeseen and curriculum weeks<br>→ 28 periods X 45 minutes X 38 weeks / 60 minutes | 798 hours | 798   |
| 2.  | <b>PPA</b> (10% of timetabled time)<br>→ 3 X 45 minutes X 38 / 60 minutes  | 86 hours  | 884   |
| 3.  | <b>Directed management time</b> (NCP) including time used for escorting pupils to the LRC, the form tutor period and learning walks<br>→ 2.5 periods X 45minutes X 38 weeks / 60 minutes                             | 71 hours  | 955   |
| 4.  | <b>Assembly</b> (once per fortnight)<br>→ 0.5 hours X 18 occasions over the academic year  | 9 hours   | 964   |
| 5.  | <b>Before school duties / small group tutorials (8.20 to 8.30am) and after school duties / small group tutorials (4.00 to 4.15pm).</b><br>→ 5 X 15 minutes X 38 weeks / 60 minutes                                   | 48 hours  | 1012  |
| 6.  | <b>Monday morning Briefing from 8.25 to 8.30am</b><br>5 minutes X 38 / 60 minutes  | 3 hours   | 1015  |
| 7.  | <b>Registration from 8.30 to 8.45am / 3.45 to 4.00pm</b><br>→ 0.25 hours X 5 per week X 38 weeks   | 48 hours  | 1063  |
| 8.  | <b>Break including break duty from 10.15 to 10.30am</b><br>→ 0.25 hours X 5 per week X 38 weeks  | 48 hours  | 1111  |
| 9.  | <b>Staff review meetings / PDR</b>   | 2 hours   | 1113  |
| 10.   | <b>Department training and development meeting</b><br>→ 1.5 hours X 18   | 27 hours  | 1140  |
| 11.   | <b>Year team training and development meetings</b><br>→ 1.5 hours X 18   | 27 hours  | 1167  |
| <b>1167 HOURS / 38 weeks = 30.7 hours per week or 6 hours per day (average)</b> |  |           |       |
| OTHER ACTIVITIES (outside of normal cycle)                                      |  |           |       |
| 12.   | <b>INSET days</b> including 10 X 60 minute sessions in lieu of 2 INSET days (5 hours X 5 Days)   | 25 hours  | 1192  |
| 13.   | <b>Extra-curricular activities</b><br>(1 hour per week on average)   | 38 hours  | 1230  |
| 14.   | <b>Lesson Observation Feedback</b>   | 5 hours   | 1235  |
| 15.   | <b>Annual Valentines' disco and Mufti day</b>  | 2 hours   | 1237  |
| CONSULTATION WITH PARENTS inc. preparation time as directed                     |  |           |       |
| 16.   | <b>Open Evening</b>  | 4 hours   | 1241  |
| 17.   | <b>Year team Curriculum or Options' Evening</b>  | 3 hours   | 1244  |
| 18.   | <b>Other parental consultation outside of the normal cycle</b>   | 6 hours   | 1250  |

An additional **15 hours** of the time budget for each member of staff to be directed by the head teacher  
 All tutors attached to Years 7 → 9 and 13 are expected to conduct their small group tutorials (8.20 to 8.30am) prior to registering their form groups from 8.30 to 8.45am  
 All tutors attached to Years 10 → 12 are expected to register their form groups from 3.45 to 4.00pm and conduct their small group tutorials from 4.00 to 4.15pm (if not on duty)  
 Blanks on timetables are not observed during periods when the timetable is collapsed e.g. the curriculum weeks and learning to learn days.

## DIRECTED TIME FOR TEACHERS WITH RESPONSIBILITIES (1265 HOURS)

|   | TEACHING AND DUTIES (within normal school cycle)   | HOURS     | TOTAL |
|---|--|-----------|-------|
| 1.  | <b>Teaching and timetabled duties</b> (up to 48 periods per fortnight) including rare cover for colleagues where the absence is unforeseen, curriculum weeks and target setting days → 24 periods X 45 minutes X 38 weeks / 60 minutes | 684 hours | 684   |
| 2.  | <b>PPA</b> (10% of timetabled time)<br>→ 2.5 X 45 minutes X 38 / 60 minutes  | 71 hours  | 755   |
| 3.  | <b>Directed management time</b> (NCP) including time used for escorting pupils to the LRC, learning walks and TLR detention duty<br>→ 4 periods X 45minutes X 38 weeks / 60 minutes  | 114 hours | 869   |
| 4.  | <b>Assembly</b> (once per fortnight)<br>→ 0.5 hours X 18 occasions over the academic year  | 9 hours   | 878   |
| 5.  | <b>Before school duties (8.20 to 8.30am) and after school duties (4.00 to 4.15pm).</b><br>→ 2 X 15 minutes X 38 weeks / 60 minutes   | 19 hours  | 897   |
| 6.  | <b>Monday morning Briefing from 8.25 to 8.30am</b><br>5 minutes X 38 / 60 minutes  | 3 hours   | 900   |
| 7.  | <b>Cover and support for; and observation of Registration and Small Group Tutorials from 8.20 to 8.45am / 3.45 to 4.15pm</b><br>→ 0.5 hours X 3 per week X 38 weeks  | 57 hours  | 957   |
| 8.  | <b>Staff review meetings / PDR</b>   | 10 hours  | 967   |
| 9.  | <b>Break including break duty 10.15 – 10.30am</b>  | 48 hours  | 1015  |
| 10.   | <b>Department training and development meeting</b><br>→ 1.5 hours X 18   | 27 hours  | 1042  |
| 11.   | <b>TLR1 Line management meeting</b><br>→ 1.5 hours X 18  | 27 hours  | 1069  |
| 12.   | <b>TLR1 (CD/TD/PP) TADM</b><br>→ 1.5 hours X 18  | 27 hours  | 1096  |
| 13.   | <b>Year team training and development meetings</b><br>→ 1.5 hours X 18   | 27 hours  | 1123  |
| <b>1123 HOURS / 38 weeks = 29.6 hours per week or 5.9 hours per day (average)</b> |  |           |       |

### OTHER ACTIVITIES (outside of normal cycle)

|     |  |          |      |
|-----|--|----------|------|
| 14. | <b>INSET days</b> including 10 X 60 minute sessions in lieu of 2 INSET days (5 hours X 5 Days) | 25 hours | 1148 |
| 15. | <b>Middle management training and development meetings</b> 1.5 hours X 8                       | 12 hours | 1160 |
| 16. | <b>Extra-curricular activities</b> (1 hour per week on average)                                | 38 hours | 1198 |
| 17. | <b>Lesson observation feedback</b>   | 20 hours | 1218 |
| 18. | <b>Annual Valentines' disco and Mufti day</b>  | 2 hours  | 1220 |

### CONSULTATION WITH PARENTS inc. preparation time as directed

|     |   |          |      |
|-----|---|----------|------|
| 19. | <b>Open Evening</b>   | 4 hours  | 1224 |
| 19. | <b>Year team Curriculum Evening</b>   | 3 hours  | 1227 |
| 20. | <b>Awards' Evening</b>  | 2 hours  | 1229 |
| 22. | <b>Years 8, 9 (KS4) and Year 11 (6<sup>th</sup> form) Options' Evenings</b> | 9 hours  | 1238 |
| 23. | <b>Other parental consultation</b> outside of the normal cycle              | 10 hours | 1248 |
| 24. | <b>Year 6 Special Parents' Meeting</b> (for TLR7 team only)                 | 2 hours  | 1250 |

- An additional **17 / 15 hours** of the time budget for each member of staff to be directed by the head teacher
- All TLRs attached to Years 7 → 9 and 13 are expected to oversee registration and small group tutorial in their year groups from 8.20 to 8.45am (if not on duty).
- All TLRs attached to Years 10 → 12 are expected to oversee registration and small group tutorial in their year groups from 3.45 to 4.15pm (if not on duty).
- Blanks on timetables are not observed during periods when the timetable is collapsed e.g. curriculum weeks and learning to learn day

| YEAR 7  | YEAR 8   | YEAR 9   | YEAR 10   | YEAR 11  | YEAR 12  | YEAR 13  |
|---|--|--|---|--|--|--|
| Alison Lusuardi AHT   | Sapuran Gill AHT   | Alan Bate AHT  | Kate Johnson AHT  | Alka Patel/<br>Kamal Thacker AHT   | Nicky Meston AHT                                   |  |
| Katy Reeves<br>TLR1 Pupil Progress  | Rachael Stribling<br>TLR1 Pupil Progress                                   | Rekha Sabharwal<br>TLR1 Pupil Progress   | Jenny Moses<br>TLR1 Pupil Progress  | Marc Williams<br>TLR1 Pupil Progress   | Clare Muir<br>TLR1 Pupil Progress                  | Joy Spreadbury<br>TLR1 Pupil Progress              |
| Nicola Magner<br>TLR1 Staff Dev.  | Kris Bolt<br>TLR1 Staff Dev.   | Elena Sanz<br>TLR1 Staff Dev.  | Alex McGhee<br>TLR1 Staff Dev.  | Nadia Habraszewski<br>TLR1 Staff Dev.  |  |  |
| Inder Kaur<br>TLR1 Curric. Dev.   | Claire Hayes<br>TLR1 Curric. Dev.  | Shaheen Butt<br>TLR1 Curric. Dev.  | Catherine Carey<br>TLR1 Curric. Dev.                                      | Laura Varley<br>TLR1 Curric. Dev.  | Mamta Jaitley<br>TLR1 Curric. Dev.                 | Andy Webb<br>TLR1 Curric. Dev.                     |
| 7 Roosevelt<br>Sarah Turner<br>G5   | 8 Roosevelt<br>Amrita Ahluwalia<br>B6                                      | 9 Einstein<br>Tarik Embaye<br>S1   | 10 Gandhi<br>Reshma Patel<br>F1   | 11 Einstein<br>Zainab Maniar (TLR2)<br>G8                                      | 12 Owens<br>Sanja Ludlow (TLR2)<br>1.08            | 13 King<br>Patrick Dawkins<br>2.01                 |
| 7 King<br>Katherine Mee<br>G6   | 8 Gandhi<br>Amy Caulfield<br>B2  | 9 Owens<br>James Mutton<br>S5  | 10 Einstein<br>Mehana Semar<br>F10  | 11 Owens<br>Bushra Begum (TLR 2)<br>G3   | 12 Curie<br>Amy Maclean (TLR2)<br>1.04             | 13 Roosevelt<br>Alan Crowe (TLR2)<br>2.03          |
| 7 Gandhi<br>Amit Kochhar<br>G7  | 8 Curie<br>Sarah MacDonald<br>B3   | 9 Mandela<br>Karl Palmer (TLR2)<br>S4  | 10 Owens<br>Catherine Toms<br>(TLR2 H.O.H.U)<br>F2                        | 11 Mandela<br>Sarah Bowles (I.S.L.C) (8)<br>Selina Akhtar (2) A4               | 12 Churchill<br>Alysha Rumblelow<br>1.02           | 13 Gandhi<br>Jag Kumar<br>2.04                     |
| 7 Parks<br>Shelley Eastwick<br>G8   | 8 Owens<br>Sam Whitehouse<br>B4  | 9 Gandhi<br>Alice Janssens<br>S2   | 10 Mandela<br>Franck Marceteau (8)<br>Magdalena Krohn (2)<br>F4           | 11 Roosevelt<br>Denise Galstaun (8)<br>(TLR2) / Natalie<br>Shepping (10)<br>A1 | 12 King<br>Axel Foubai<br>1.10                     | 13 Einstein<br>Keith Paterson<br>2.05              |
| 7 Einstein<br>Zachary Rawlinson<br>G3   | 8 Mandela<br>Rishi Thakur<br>B1  | 9 Roosevelt<br>Beth Walters (TLR2)<br>S6                                       | 10 Roosevelt<br>Paul Middleton p/t (TLR2)<br>Tim Hemming TLR (2)<br>F5    | 11 Gandhi<br>Sukhi Bharj (8)<br>Laura Varley TLR (2)<br>A5                     | 12 Roosevelt<br>Joseph Coulter (TLR2)<br>1.07      | 13 Parks<br>Binny Sharma (TLR2)<br>2.02            |
| 7 Shakespeare<br>Kate Darroch (TLR2)<br>A3  | 8 King<br>Emma Harvey<br>(TLR2 H.O.H.L)<br>B5                              | 9 Shakespeare<br>Anna Price<br>S7  | 10 Parks<br>Robyn Seward<br>(TLR2 H.O.H.E)<br>F7                          | 11 Shakespeare<br>Vanisha Sharma (TLR 2)<br>A3                                 | 12 Einstein<br>Jon Elkon<br>1.06                   | 13 Mandela<br>Sarah Horton<br>2.06                 |
| 7 Owens<br>Duncan White/<br>G9<br>Kulvinder Toor TA                                     | 8 Parks<br>Sarah Hurlstone TLR 2<br>p/t (8) /<br>Kris Bolt TLR1 (2)<br>B7  | 9 Churchill<br>Lindsay Southworth*<br>(TLR2) (8)<br>Shaheen Butt TLR (2)<br>S8 | 10 Shakespeare<br>Elena Samson (8)<br>Magdalena Krohn (2)<br>F8           | 11 Churchill<br>Alex Grant<br>A2   | 12 Gandhi<br>Samira Osmane<br>1.05                 | 13 Curie<br>John Andrews<br>2.07                   |
| 7 Churchill<br>Thurka Jeyachandran<br>Kalaivani Karunaanadan<br>(TA)<br>G10             | 8 Shakespeare<br>Gurnaik Sangha<br>(TLR2 (H.O.H.I)<br>Nova Parker TA<br>B8 | 9 King<br>Teresa Nagaoka (TLR2)<br>Anna Widuch TA<br>S9                        | 10 Churchill<br>Tariq Abdullah (9)<br>John Casey p/t (1)<br>F9            | 11 Curie<br>Amritpal Aujla<br>(TLR2 H.O.H.H)<br>G9                             | 12 Mandela<br>Krista Grant (TLR2)<br>1.09          | 13 Shakespeare<br>Amy McNicholas<br>(TLR2)<br>2.08 |
| 7 Mandela<br>Christopher Briggs (7)<br>(TLR2)<br>Melissa West (3)<br>Anita Asid (TA) A1 | 8 Einstein<br>Sunil Patnaik<br>Harmesh Najran TA<br>B9                     | 9 Parks<br>Paul Nwaolise<br>TA (TBC)<br>G1                                     | 10 Curie<br>Rebecca Perks<br>(TLR2 pro-rata)<br>Shazia Hussain (TA)<br>F3 | 11 King<br>Richard Holden (TLR 2)<br>Sushila Prasai TA<br>G4                   | 12 Shakespeare<br>David Walters<br>1.03            |  |
| 7 Curie<br>Susan Womersley (5)<br>Happy Moore (5)<br>Abdul Hirad (TA) A2                | 8 Churchill<br>Shefalee Varma<br>Nicole Jones TA<br>B10                    | 9 Curie<br>Shaun Wills<br>Divinia Aloysius<br>G2                               | 10 King<br>Annie P Jackson (TLR2)<br>Zanib Mushtaq (TA)<br>F11            | 11 Parks<br>Shiri Gill<br>Naila Yaseen TA<br>G10                               |  |  |
| Parminder Dosanjh   | Tracey Simpson   | Otis Matthew   | Fabian Robertson  | Emma Coutts  | Loretta Miller                                     | Natasha Smith                                      |
| Unassigned: Wajeedah Bhunnoo p/t  |  | Eve Smykle –Year 11  |   |  | Patricia Periera – Year 12 Farida Zaabar – Year 13 |  |

## Management Structure (2011-2012).

SMT operate within a flat structure with 1 Deputy and 8 AHTs (see below). SMT responsibilities are reviewed annually to facilitate broader professional experience and preparation for Headship.

Each year group is overseen by 1 AHT and 3 TLR1's. TA's and Learning Mentors are allocated to each year group and TA's are timetabled with PPA time to work and prepare alongside subject teachers. Cross-curricular teams bring together specific TLR1s from different year teams to facilitate sharing of best practice and to support progression.

Whole School Development Teams are constituted annually and meet half termly to review specific elements of the SDP.

| YEAR TEAM                   | CROSS-CURRICULAR TEAMS                     | WHOLE SCHOOL DEVELOPMENT TEAMS |
|-----------------------------|--|--------------------------------|
| AHT                         |  | Staff Development              |
| TLR1 Pupil Progress         | Pupil Progress + 3 AHTs                    | Digital Learning Group         |
| TLR1 Teacher Development    | Teacher Development + 3 AHTs + consultant. | Global partnerships            |
| TLR1 Curriculum Development | Curriculum Development + 2 AHTs            | Pastoral Development           |
|                             |  | Specialist School              |
|                             |  | Academy Development Team       |

**Pupil Progress Team Meetings:** To monitor progress and standards across the year teams including – attendance and punctuality, rewards and sanctions, intervention strategies, planning for Curriculum Weeks. To review strategies used in Year Teams, share best practice and develop common approaches

**Teacher Development Team Meetings:** To report back on lesson observations taking place within Year Teams and ensure consistency in application of the ALC. To identify best practice for sharing with colleagues, whole school issues emerging from observations and training needs

**Curriculum Development Team Meetings:** To report back on lesson observations, curriculum mapping and identify curriculum related issues causing concern e.g. pitch/challenge etc. To ensure consistency in the setting of homework and approaches to marking/feedback. To oversee preparation for Curriculum Weeks.

## Management Responsibilities of SLT

| Line Management oversight – Gerry Wadwa, Headteacher |  |                                       |  |   |   |   |
|--|--|---------------------------------------|--|---|---|---|
|  | Neil Bradford  | Alan Bate                             | Kate Johnson   | Alka Patel  | Kamal Thacker   | Sapuran Gill                                |
|  | Deputy Headteacher   | Assistant Headteacher                 | Assistant Headteacher  | Assistant Headteacher   | Assistant Headteacher   | Assistant Headteacher                       |
| Title  | Director of Innovation and Resources                               | Director of Specialism                | Director of Curriculum Development (KS3) and Cross Curricular Strategies | Director of Pupil Progress for Children with Additional Needs | Director of 14-19 Curriculum                                      | Director of Pupil Progress and Intervention |
| Year Team  |  | Year 9                                | Year 10  | Year 11   | Year Team Options oversight and support                           | Year 8                                      |
| Departments  | ICT; Maths   | P.E.; English; Library Literacy       | Geography; RE; PSHE & Citizenship;                                       | MFL; Art  | Business Studies; Health and Social Care; Travel and Tourism; YAs | Science; Economics                          |
|  | E' Learning  | Teacher Developers                    | Curriculum Developers  | Pupil Progress  | Curriculum Developers   | Pupil Progress                              |
|  | Leading Edge and SIMS Partnerships                                 | Sports Centre School Sports Programme | Global Citizenship SMSC incl reflections, major religious festivals      | SEN/ EAL/G&T<br><br>EP/Speech & Language Services             | Educational Visits and Cover                                      | Learning Gateway                            |
|  | Liaison and support to all AHT's Curriculum Planning & T-T Support | D of E Award                          | Students as Partners in Learning (SAPL) Student Council and Committees   | Creative Partnerships   | Timetabler Directed Time Budget Calendar oversight                | Examinations and LM of Exams Officer        |
|  | IT Team;   | Healthy Schools                       | Enrichment including Curriculum Enrichment Weeks (Summer)                | Student Services - SEN/ EAL/G&T support                       | Curriculum Enrichment Weeks (Autumn)                              | Data Manager and LM of SIMS Manager         |



|                              | <b>Neil Bradford</b>             | <b>Alan Bate</b>                                | <b>Kate Johnson</b>                       | <b>Alka Patel</b>  | <b>Kamal Thacker</b>                           | <b>Sapuran Gill</b>              |
|------------------------------|----------------------------------|---|---|--|--|----------------------------------|
|                              | Oversight all census returns     |   | Professional Learning Community (support) | Oversight of Year Team structure                                     | Applied Learning/Enterprise/ IAG/Careers & WRL | MLD Coach                        |
|                              |                                  |   |   | September Target Setting Days Beginning and End of Term Arrangements |  | April Target Setting Days        |
| <b>Whole School Events *</b> | Support for All Options Evenings | Sports Awards Evening<br>Year 9 Options Evening | Prize Giving                              | Prize Giving Disco   | Year 8,9,Sixth Form Options Evenings           | Year 8 Options Evening           |
| <b>Governing Body</b>        | Finance<br>Full GB (Summer Term) | Sports Centre Management                        | Curriculum                                | Curriculum   | Curriculum                                     | Full GB (Autumn Term)<br>Finance |

| <b>Line Management oversight – Gerry Wadwa, Headteacher</b> |   |  |   |
|---|---|--|---|
|   | <b>Nicky Meston</b>                                       | <b>John Noel</b>   | <b>Alison Lusuardi</b>  |
|   | Assistant Headteacher                                     | Assistant Headteacher  | Assistant Headteacher   |
| <b>Title</b>  | Director of Sixth Form                                    | Director of Inclusion  | Director of Quality Assurance and Continuous Professional Development |
| <b>Year Team</b>  | Years 12 and 13   |  | Year 7  |
| <b>Departments</b>  | Psychology; Sociology Government and Politics             | SID; Student Services (incl oversight of student personal data); Facilities Team | History; Performing Arts  |
|   | Post 16 Network   | House Structure; SEN (EBSD)  | Professional Learning Community Lead                                  |
|   | Teacher Developers<br>Sixth Form Student Committee        | Pupil Progress<br>Learning Mentors and Parent Advisers;<br>Visual Communications | Teacher Developers  |
|   | Higher Education Transition<br>Russell Group Developments | Attendance and Behaviour including<br>Rewards and Sanctions                      | SEF and Ofsted preparation  |
|   | Notices   | Community Cohesion   | INSET including Leadership of MTL                                     |
|   |   | Transition   | LM of Teacher Coach   |
|   |   | Learning Gateway   | Governors Day; Governors Report                                       |
|   |   | Pupil Planner  | New Staff and NQT Induction   |
| <b>Whole School Events *</b>                                | Sixth Form Open Evening                                   | Open Evening; Y9 residential<br>Y6 Induction                                     | Oversight of Performing Arts events<br>Open Evening                   |
| <b>Governing Body</b>                                       | Staffing and Curriculum                                   | Premises   | Staffing and Curriculum   |

\* All SLT are expected to attend major events, share the support of Performing Arts events as advised by AL, share exam summer holiday student support

## WHOLE SCHOOL DEVELOPMENT TEAMS.

| <b>Staff<br/>Development<br/><u>Non Teaching</u></b> | <b>Digital Learning<br/>&amp; Fronter</b> | <b>Global<br/>Partnerships</b> | <b>Specialist School</b> | <b>Academy<br/>Development<br/>Team</b> | <b>Business<br/>Development<br/>Team</b> |
|--|---|--------------------------------|--------------------------|---|--|
| Harjinder Johal                                      | Neil Bradford                             | Kate Johnson                   | Alan Bate                | Gerry Wadwa                             | Harjinder Johal                          |
| Alison Lusuardi                                      | James Mutton                              | Alan Bate                      |                          | Chairs of Governors<br>Committees       | Shahbaz Haider                           |
| Faye Burvill   | Kris Bolt                                 | Sarah Bowles                   | Laura Varley             | Governor Staff Reps                     | Juma Abdullahi                           |
| Juma Abdullahi                                       | Patrick Dawkins                           | Eleanor Sanz                   |                          | Personnel Manager                       | Harjinder Bhambra                        |
|  |   | Katy Reeves                    |                          | Finance Manager                         |  |
|  |   | Nicola Magner                  |                          |   |  |
|  |   | Mamta Shastri                  |                          |   |  |
|  |   |                                |                          |   |  |

## Non-Teaching Management Responsibilities

- Finance and Personnel Managers report to the Head.
- ICT Systems Manager reports to the Deputy Head
- Facilities Manager and Student Services Manager report to the Director of Inclusion.

|                       |   | <b>Harj Johal</b>   | <b>Harjinder Bhambra</b>                   | <b>Parminder Bantleman</b>   | <b>Faye Burvill</b>                     |
|-----------------------|---|---|--|--|---|
| <b>Title</b>          | <b>Finance Manager</b>  | <b>Personnel and Administration Manager</b>   | <b>ICT Systems and Procurement Manager</b> | <b>Student Services Manager</b>  | <b>Facilities Manager</b>               |
| <b>LM</b>             | Finance Staff   | LM of Admin Staff, Reception  | Network Team                               | Student Services   | Caretakers, Catering Staff, Cleaners    |
|                       | Maintenance of all financial records and matters related to School Financial Standard | Oversight of recruitment, payroll, timesheets, annual leave, personnel issues, employment law |  | Administrative support for SEN matters, Curr Enrich Weeks, target setting days | Health and Safety                       |
|                       | Producing monthly CFR style budget reports for Headteacher and GB                     | Support Staff training and development  |  | Casual admissions  |   |
|                       | Liaison with auditors, CEFM   | Cover   |  | Medical Careplans  | Outsourced contractors                  |
|                       |   |   |  |  | SMSAs                                   |
| <b>Governing Body</b> | Finance   | Staffing and Curriculum   |  | Exclusions Panel   | Premises<br>Sports Centre<br>Management |

G Wadwa, July 2011

## SCHOOL DEVELOPMENT PLAN 2011-2012



### **“Together we achieve”**

At FHS each individual will realise and achieve their full potential academically, personally and socially through a rich and varied curriculum, state of the art technology and outstanding teaching and learning. We will inspire all members of our community to become global ambassadors in our increasingly interconnected world.

The following strategic priorities were identified in the 3 year vision statement **(2010-2013)** as cornerstones of our current success which we must continue to focus on:

- Relentless focus on Teaching and Learning
- A rich and varied curriculum
- Strong code of behaviour
- Use of New Technology
- Rigorous tracking systems and associated intervention

In addition the following key priorities were highlighted as areas we will develop over the next 3 years:

### **School Organisation and Design**

- Re-establishing a strong departmental structure
- Maintain the TLR Year Team Structure but review the demands on Subject Leaders
- Greater autonomy for departments to set according to ability in their own subject areas
- Establishing mixed ability and mixed talent tutor groups
- Developing a House System
- Developing outdoor space for active and safe play areas as well as quiet reflection

### **Teaching and Learning**

- To review our Accelerated Learning Cycle and develop a Teaching and Learning Policy
- To ensure lesson observations facilitate an appropriate balance between observation for Ofsted grading and observation focused professional development

### **Curriculum**

- To continue to evolve to ensure excitement, engagement and real challenge
- A reduced KS3 to facilitate personalisation through earlier option choice and enrichment
- Develop practical on site learning
- Focused deployment of staff to develop more enrichment opportunities
- Developing our Gifted and Talented programme

### **New Technology**

- Ensuring a reliable wireless network throughout the site
- Cutting edge ICT equipment and software available in all classrooms



- Develop a “Future Classroom” – an experimental learning area equipped with all the latest technology capable of allowing personalised learning through choice of technology
- Increasing parental access to pupils’ learning

### **Behaviour**

- Ensuring a consistent application of school policy – “the staff always enforce the rules” (Twelve Outstanding Schools, Ofsted Report, 2009)

### **Tracking and Monitoring Systems**

- We must continue to ensure our sophisticated use of data identifies any individual underachieving and results in intervention strategies which bring that individual back on track

### **Students as Partners in Learning**

- Develop opportunities for students to influence the way lessons are structured and develop
- Develop opportunities for students to choose activities which deliver the learning outcomes
- Initiate a Student Learning Conference
- Strengthen student leadership opportunities

### **Workforce Reform**

- Increase administrative support to SMT/Departments/Year Teams

### **AfL**

- Develop and monitor a clear assessment and marking policy which ensures pupils have frequent high quality feedback

### **Community**

- Be the local school of choice for all by celebrating ours success widely
- Embrace the community cohesion agenda and achieve the CDQS and the ISA

### **Staffing**

- Review the TLR structure
- Implement a system of Internal Promotions to support opportunities for professional growth

## **Our Key Priorities for SDP 2011-2012**

**1 Teaching and Learning** – will include a focus on literacy strategies across the curriculum and innovative approaches to Teaching and Learning. We will be constantly striving to improve teaching and learning and aiming for 90% lessons to be good or better. We want to develop our strategies for coaching with a particular focus on moving teachers from good to outstanding and work towards our ambition to become a Teaching School. As part of a drive towards consistent high quality teaching and learning we will develop our lesson observation criteria.

**2 Curriculum Development** – we will be implementing and evaluating our reduced KS3 offer and 3 year KS4 in line with our desire to facilitate greater personalisation and raise standards. For one year we will need to offer careful IAG to **two** year groups who will be selecting KS4 options. We will continue our focus on broadening curriculum enrichment opportunities and begin to monitor which groups attend. The introduction of a number of our new guided E Bac/non E Bac pathways will need to be implemented and evaluated. The FHS Skills will be rolled out to other year groups and our approach to assessing these skills will be developed. We will also need to evaluate and embed our post 16 offer in and ensure value for money in light of new post 16 funding arrangements.

**3 Pupil Progress and Intervention** – we must continue to look at strategies for raising achievement and narrowing the attainment gap as guided by our FHS interventions document and partly funded through Pupil Premium. We will evaluate and develop our 1:1 programme. We must consider the implications of new league table measures and adapt interventions accordingly. We must continue to ensure behaviour remains very good and our approaches consistent. The consistent use of the school diary as a means of communication to parents still needs working on; we should evaluate and develop our use of the Learning Gateway to communicate with parents especially with challenging students/families.

**4 Leadership and Management** – we need to decide on Specialist status. We must ensure the new freedoms and accountabilities associated with Academy status are planned for and reflect the “Six Principles”. We want to ensure that we remain at the forefront of New Technology and innovation and must measure the impact of current strategies and develop the DLG into a high profile team. We must ensure that as Lead School our Middle Leadership Development programme becomes a high quality programme. Our Schools Sports Partnership will become in house and we will need to develop quality control procedures. We must source funds to facilitate our site development plans. We will need to use Kirkland Rowell to support the development of the next 3 year plan.

G Wadwa, July 2011

| Main User | Position | Ext. |
|-----------|----------|------|
|-----------|----------|------|

#### SLT

|                 |   |     |
|-----------------|---|-----|
| Gerry Wadwa     | Head Teacher  | 202 |
| Neil Bradford   | Deputy Head   | 203 |
| Alan Bate       | AHT - Director of specialism                          | 245 |
| Alison Lusuardi | AHT – CPD   | 236 |
| Alka Patel      | AHT - Director CD & Senco                             | 210 |
| John Noel       | AHT - Director of Inclusion                           | 241 |
| Kate Johnson    | AHT - Director CD (KS3) & Strategies                  | 246 |
| Kamal Thacker   | AHT - Director of Applied learning & 14-19 Curriculum | 223 |
| Nicola Meston   | AHT - Director Sixth Form                             | 213 |
| Sapuran Gill    | AHT - Director of PP & Intervention Strategies        | 238 |

#### Receptions

|               |                       |     |
|---------------|-----------------------|-----|
| Baldish Singh | Main School Reception | 201 |
| Ravinder Punn | 6th Form Reception    | 304 |

#### Main Office

|                 |                                       |     |
|-----------------|---------------------------------------|-----|
| Brigitte Goldie | PA to Head                            | 208 |
| Donna White     | HR Assistant                          | 249 |
| Harjinder Johal | HR Manager (0208 571 8787)            | 292 |
| Narinder Dutt   | Assessment and Curriculum Coordinator | 255 |
| Sophie Kempke   | Work Related Learning Co-ordinator    | 204 |

#### Student Services

|                     |                                    |     |
|---------------------|------------------------------------|-----|
| Balbinder Sanghera  | SIM's Administrator                | 205 |
| Kuldip Bnait        | Student Services Admin Assistant   | 294 |
| Parminder Bantleman | Pastoral Manager                   | 291 |
| Parveen Choudri     | Student Services Administrator     | 224 |
| Veronica Lourdes    | Attendance Officer / Administrator | 293 |

#### Finance

|                   |                   |     |
|-------------------|-------------------|-----|
| Indu Gupta        | Finance Assistant | 227 |
| Satvinder Rooprai | Finance Assistant | 290 |
| Shahbaz Haider    | Finance Manager   | 228 |

#### Admin / General

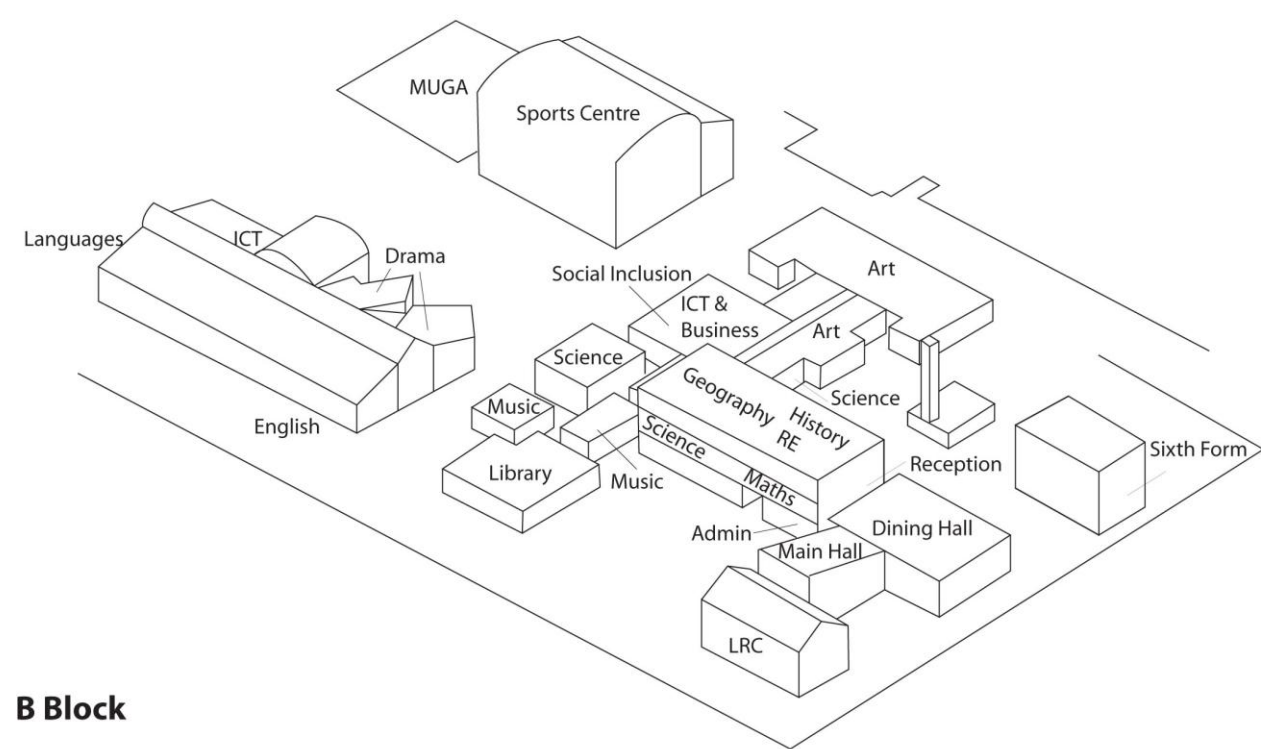
|                     |   |     |
|---------------------|---|-----|
| Alexandra Thompson  | Visuals Communications & special Projects Officer | 218 |
| Andrew Webb         | Head of Careers                                   | 239 |
| Chris Scotland      | Main School Library                               | 232 |
| Connexions          | Connexions  | 216 |
| Faye Burvill        | Facilities Manager                                | 211 |
| IT Sevices/Helpdesk | B-Block Office                                    | 212 |
| Juma Abdullahi      | Sports Centre Manager                             | 243 |

|                       |   |     |
|-----------------------|---|-----|
| Kevin Barret/Raj Kang | Caretakers (Office in Main School Hall) | 219 |
| Marie Wyatt           | Exams Officer                           | 260 |
| Ranjan Bhardwa        | Reprographics                           | 253 |
| Sharan Sond           | PA to Sixth Form                        | 229 |
| Sixth Form Library    | Sixth Form Library                      | 231 |
| Sports Reception      | Sports Centre Reception                 | 307 |
| Sports Centre Office  | Sports centre Office                    | 251 |
| Tim Dawson            | Data Manager                            | 209 |

#### **FHS DEPARTMENTS / OTHER**

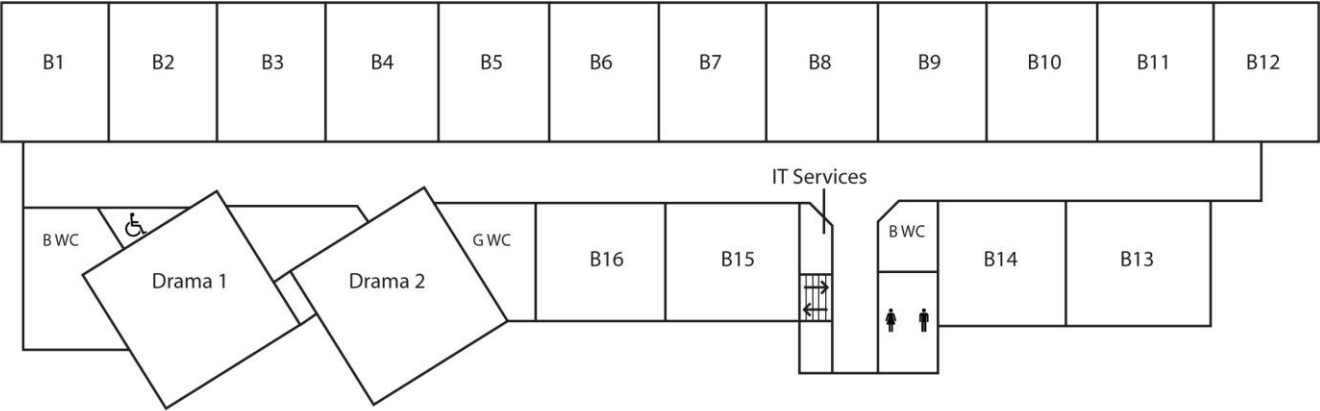
|                       |                                       |     |
|-----------------------|---------------------------------------|-----|
| Year 7 TLR's          | Ground Floor (Opposite Science Rooms) | 207 |
| Year 8 TLR's          | B-Block Office Upstairs               | 234 |
| Year 9 TLR's          | Second Floor (Next to S1)             | 220 |
| Year 10 TLR's         | First Floor (Next to F1)              | 217 |
| Year 11 TLR's         | Opposite Student Services             | 222 |
| Year 12 TLR's         | Sixth Form (Next to Cafe)             | 230 |
| Year 13 TLR's         | Sixth Form (Near Staff Room)          | 239 |
| Sixth Form AV Room    | Sixth Form Audio Visual Room          | 261 |
| Science Prep Room     | Sixth Form Prep Room One 2nd Floor    | 225 |
| Science Prep Room     | Sixth Form Prep Room Two 2nd Floor    | 226 |
| LBSC KS3              | KS3 Office (Behind LRC)               | 259 |
| LBSC KS4              | KS4 Classroom                         | 247 |
| Learning Mentors      | SID                                   | 323 |
| Emma Coutts           | Office in Seclusion                   | 242 |
| Seclusion Room        | Seclusin Room                         | 248 |
| Loretta Miller        | LLM Office                            | 215 |
| Parminder/Fabian/Otis | Learning Mentors                      | 262 |
| Malcolm Spoor         | Office in Seclusion                   |     |
| Rhoda Simmons         | Science Prep Room (F5)                | 258 |
| Jasleen Singh         | Science Prep Room (G5)                | 257 |
| Ahmed /Gurpal         | Science Prep Room (G9)                | 256 |
| Amy McNicholas        | MU1 Office                            | 214 |
| Sarah Hurlstone       | Art Office                            | 254 |
| Claire Hayes          | PE Office                             | 244 |
| Rachel Stribling      | PE Office                             | 237 |
| Kate Darroch          | Drama Office                          | 206 |
| Jon Elkon             | Business Studies Office (G4)          | 233 |
| Richard Holden        | ICT Office                            | 302 |
| MFL Office            | MFL Office                            | 235 |
| SSP                   | PDM Office                            | 250 |

# Location of Departments

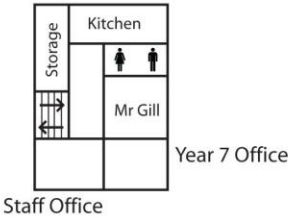


## B Block

### Ground Floor

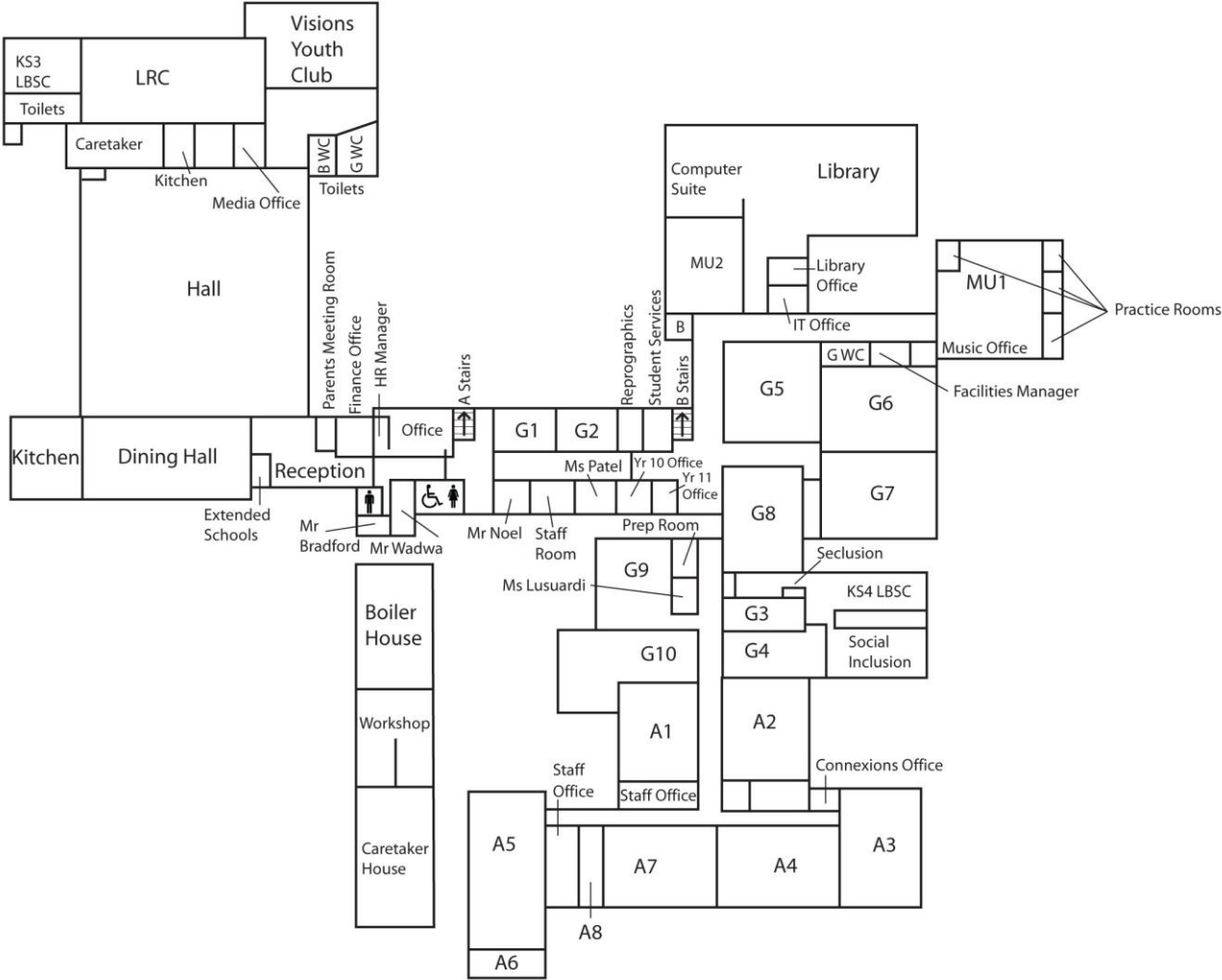


### First Floor

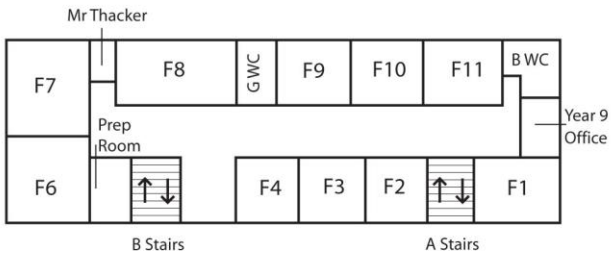


# FHS Main Building

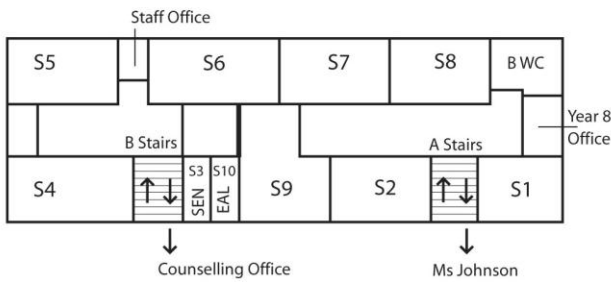
## Ground Floor



## First Floor



## Second Floor

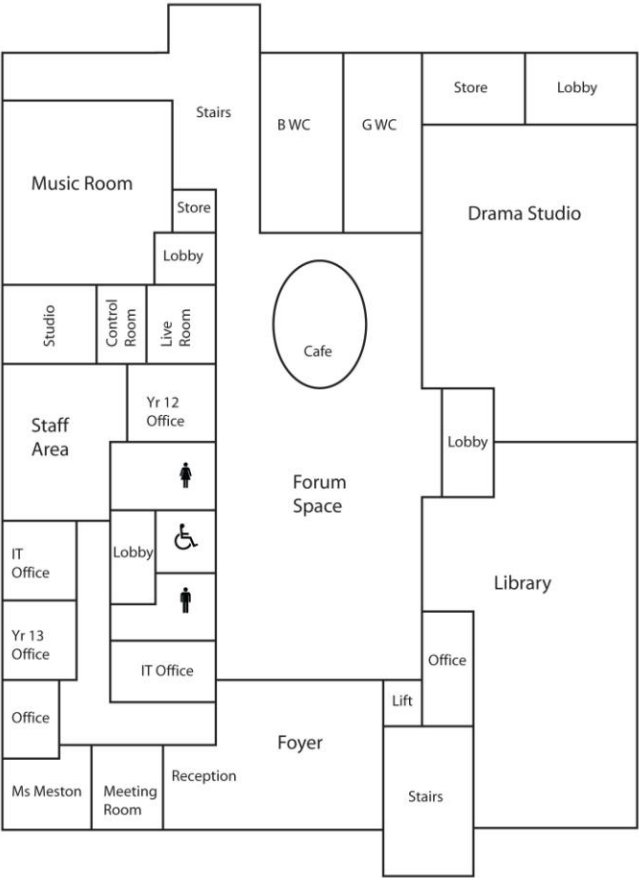


### Key

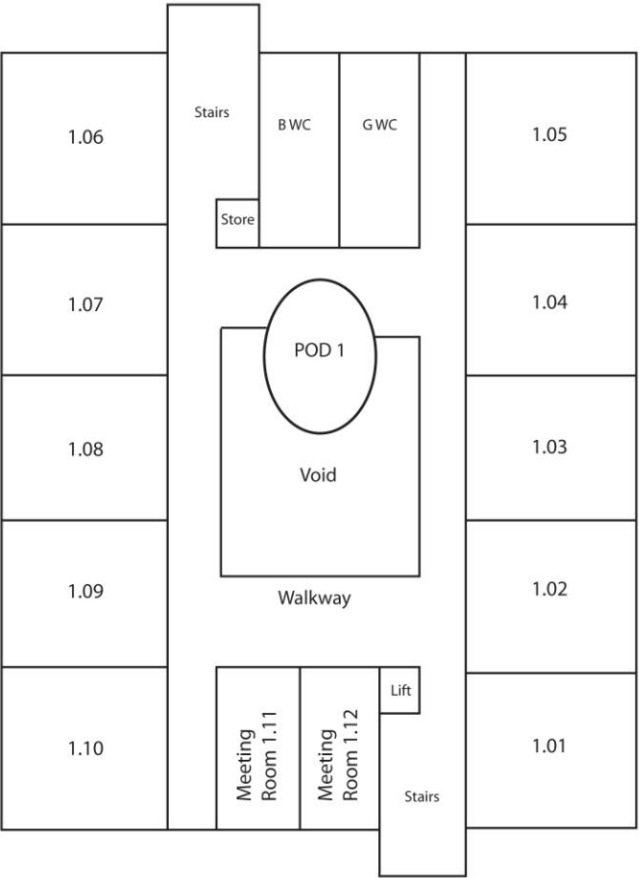
- B WC Boys' Toilets
- G WC Girls' Toilets
- AH Assistant Headteacher Office
- YH Year Head Office
- A Art Rooms
- MU Music Rooms

FHS Sixth Form Block

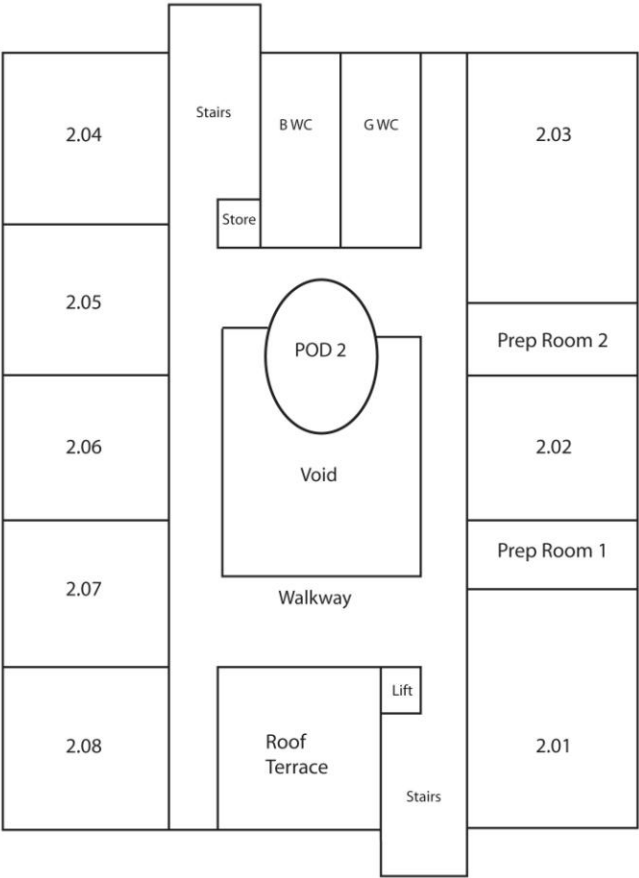
Ground Floor



First Floor



Second Floor



## Featherstone High School Overview Calendar for the Academic Year 2011-2012 (25/8/11)

| 2011-12   | M | T | W | T          | F | S | S | M      | T | W  | T          | F  | S  | S  | M       | T  | W  | T          | F  | S  | S  | M       | T  | W  | T           | F  | S  | S  | M       | T  | W  | T  | F  | S  | S  | M       | T  |  |  |  |
|-----------|---|---|---|------------|---|---|---|--------|---|----|------------|----|----|----|---------|----|----|------------|----|----|----|---------|----|----|-------------|----|----|----|---------|----|----|----|----|----|----|---------|----|--|--|--|
| August    | 1 | 2 | 3 | 4          | 5 | 6 | 7 | 8      | 9 | 10 | 11         | 12 | 13 | 14 | 15      | 16 | 17 | 18         | 19 | 20 | 21 | 22      | 23 | 24 | 25          | 26 | 27 | 28 | 29      | 30 | 31 |    |    |    |    |         |    |  |  |  |
| September |   |   |   | 1          | 2 | 3 | 4 | 5<br>A | 6 | 7  | 8          | 9  | 10 | 11 | 12<br>B | 13 | 14 | 15         | 16 | 17 | 18 | 19<br>A | 20 | 21 | 22          | 23 | 24 | 25 | 26<br>B | 27 | 28 | 29 | 30 |    |    |         |    |  |  |  |
| October   |   |   |   |            |   | 1 | 2 | 3<br>A | 4 | 5  | 6          | 7  | 8  | 9  | 10<br>B | 11 | 12 | 13         | 14 | 15 | 16 | 17      | 18 | 19 | 20<br>Yr 13 | 21 | 22 | 23 | 24      | 25 | 26 | 27 | 28 | 29 | 30 | 31<br>B |    |  |  |  |
| November  |   | 1 | 2 | 3<br>Yr 11 | 4 | 5 | 6 | 7<br>A | 8 | 9  | 10         | 11 | 12 | 13 | 14<br>B | 15 | 16 | 17         | 18 | 19 | 20 | 21<br>A | 22 | 23 | 24          | 25 | 26 | 27 | 28<br>A | 29 | 30 |    |    |    |    |         |    |  |  |  |
| December  |   |   |   | 1<br>Yr 9  | 2 | 3 | 4 | 5<br>B | 6 | 7  | 8<br>Yr 12 | 9  | 10 | 11 | 12<br>A | 13 | 14 | 15         | 16 | 17 | 18 | 19      | 20 | 21 | 22          | 23 | 24 | 25 | 26      | 27 | 28 | 29 | 30 | 31 |    |         |    |  |  |  |
| January   |   |   |   |            |   |   | 1 | 2<br>B | 3 | 4  | 5          | 6  | 7  | 8  | 9<br>A  | 10 | 11 | 12         | 13 | 14 | 15 | 16      | 17 | 18 | 19<br>Yr 10 | 20 | 21 | 22 | 23<br>A | 24 | 25 | 26 | 27 | 28 | 29 | 30<br>B | 31 |  |  |  |
| February  |   |   | 1 | 2<br>Yr 7  | 3 | 4 | 5 | 6<br>A | 7 | 8  | 9          | 10 | 11 | 12 | 13      | 14 | 15 | 16         | 17 | 18 | 19 | 20<br>B | 21 | 22 | 23          | 24 | 25 | 26 | 27<br>A | 28 | 29 |    |    |    |    |         |    |  |  |  |
| March     |   |   |   | 1          | 2 | 3 | 4 | 5<br>B | 6 | 7  | 8          | 9  | 10 | 11 | 12<br>A | 13 | 14 | 15<br>Yr 8 | 16 | 17 | 18 | 19<br>B | 20 | 21 | 22          | 23 | 24 | 25 | 26<br>A | 27 | 28 | 29 | 30 | 31 |    |         |    |  |  |  |
| April     |   |   |   |            |   |   | 1 | 2      | 3 | 4  | 5          | 6  | 7  | 8  | 9       | 10 | 11 | 12         | 13 | 14 | 15 | 16<br>B | 17 | 18 | 19          | 20 | 21 | 22 | 23<br>A | 24 | 25 | 26 | 27 | 28 | 29 | 30<br>B |    |  |  |  |
| May       |   | 1 | 2 | 3          | 4 | 5 | 6 | 7<br>A | 8 | 9  | 10         | 11 | 12 | 13 | 14<br>B | 15 | 16 | 17         | 18 | 19 | 20 | 21<br>A | 22 | 23 | 24          | 25 | 26 | 27 | 28<br>B | 29 | 30 | 31 |    |    |    |         |    |  |  |  |
| June      |   |   |   |            | 1 | 2 | 3 | 4      | 5 | 6  | 7          | 8  | 9  | 10 | 11<br>A | 12 | 13 | 14         | 15 | 16 | 17 | 18<br>B | 19 | 20 | 21          | 22 | 23 | 24 | 25<br>A | 26 | 27 | 28 | 29 | 30 |    |         |    |  |  |  |
| July      |   |   |   |            |   |   | 1 | 2<br>B | 3 | 4  | 5          | 6  | 7  | 8  | 9<br>A  | 10 | 11 | 12         | 13 | 14 | 15 | 16<br>B | 17 | 18 | 19          | 20 | 21 | 22 | 23      | 24 | 25 | 26 | 27 | 28 | 29 | 30      | 31 |  |  |  |

### NOTES / KEY (all other team meetings are timetabled to take place during normal school times)

|   |  |   |  |   |
|---|--|---|--|---|
| <b>Holidays – summer holiday is extended</b><br><b>23<sup>rd</sup> and 24<sup>th</sup> July – days off in lieu of twilight</b><br><b>whole school INSET</b><br><b>25<sup>th</sup> and 26<sup>th</sup> July – occasional days</b><br><b>27<sup>th</sup> July – day off in lieu of the Queen's</b><br><b>Diamond Jubilee bank holiday</b> |  | <b>Staff training Days</b>                      |  | <b>Middle Leadership Team TADM</b>                  |
|   |  | <b>Pupil Induction days</b>                     |  | <b>Whole school TADM X 9 / +1 hour for peer obs</b> |
|   |  | <b>Target Setting and On-Line Learning days</b> |  | <b>Options and Curriculum Evenings</b>              |
|   |  | <b>Awards' Evening</b>                          |  | <b>Curriculum weeks</b>                             |
|   |  | <b>Open Evening</b>                             |  | <b>Annual Valentine's disco and Mufti</b>           |



**05 September 2011 -  
11 September 2011**

| September 2011 |    |    |    |    |    |    |
|----------------|----|----|----|----|----|----|
| Mo             | Tu | We | Th | Fr | Sa | Su |
|                |    |    | 1  | 2  | 3  | 4  |
| 5              | 6  | 7  | 8  | 9  | 10 | 11 |
| 12             | 13 | 14 | 15 | 16 | 17 | 18 |
| 19             | 20 | 21 | 22 | 23 | 24 | 25 |
| 26             | 27 | 28 | 29 | 30 |    |    |

| October 2011 |    |    |    |    |    |    |
|--------------|----|----|----|----|----|----|
| Mo           | Tu | We | Th | Fr | Sa | Su |
|              |    |    |    |    | 1  | 2  |
| 3            | 4  | 5  | 6  | 7  | 8  | 9  |
| 10           | 11 | 12 | 13 | 14 | 15 | 16 |
| 17           | 18 | 19 | 20 | 21 | 22 | 23 |
| 24           | 25 | 26 | 27 | 28 | 29 | 30 |
| 31           |    |    |    |    |    |    |

**05 September**

- ☐ 00:00 Week A ➡
- ☐ 08:45 - 15:45 Staff Training Day 1

**06 September**

- ☐ ⬅ Week A ➡
- ☐ 00:00 Y13 UCAS appointments with Tutor ➡
- ☐ Pupil Induction Day 1

**07 September**

- ☐ ⬅ Week A ➡
- ☐ ⬅ Y13 UCAS appointments with Tutor ➡
- ☐ Pupil Induction Day 2

**08 September**

- ☐ ⬅ Week A ➡
- ☐ ⬅ 00:00 Y13 UCAS appointments with Tutor ➡
- ☐ 00:00 Online Learning Days ➡
- ☐ 00:00 Year 10 WEX briefing by EBP ➡
- ☐ Target Setting Day 1

**09 September**

- ☐ ⬅ 00:00 Week A ➡
- ☐ ⬅ 00:00 Online Learning Days ➡
- ☐ ⬅ 00:00 Year 10 WEX briefing by EBP ➡
- ☐ Oxbridge Tutor & Student Statements
- ☐ Target Setting Day 2

**10 September**

**11 September**

**12 September 2011 -  
18 September 2011**

| September 2011 |    |    |    |    |    |    |
|----------------|----|----|----|----|----|----|
| Mo             | Tu | We | Th | Fr | Sa | Su |
|                |    |    |    | 1  | 2  | 3  |
| 5              | 6  | 7  | 8  | 9  | 10 | 11 |
| 12             | 13 | 14 | 15 | 16 | 17 | 18 |
| 19             | 20 | 21 | 22 | 23 | 24 | 25 |
| 26             | 27 | 28 | 29 | 30 |    |    |

| October 2011 |    |    |    |    |    |    |
|--------------|----|----|----|----|----|----|
| Mo           | Tu | We | Th | Fr | Sa | Su |
|              |    |    |    |    | 1  | 2  |
| 3            | 4  | 5  | 6  | 7  | 8  | 9  |
| 10           | 11 | 12 | 13 | 14 | 15 | 16 |
| 17           | 18 | 19 | 20 | 21 | 22 | 23 |
| 24           | 25 | 26 | 27 | 28 | 29 | 30 |
| 31           |    |    |    |    |    |    |

## 12 September

- ☐ 00:00 Week B ➡
- ☒ 00:01 Oxbridge - TLR proof read Tutor and Personal Statement & feedback ➡

## 13 September

- ☐ ⬅ Week B ➡
- ☒ ⬅ Oxbridge - TLR proof read Tutor and Personal Statement & feedback ➡
- ☐ NQT Induction
- ☒ 09:00 - 12:00 Year 7 Photos (Main Hall)

## 14 September

- ☐ ⬅ Week B ➡
- ☒ ⬅ Oxbridge - TLR proof read Tutor and Personal Statement & feedback ➡

## 15 September

- ☐ ⬅ Week B ➡
- ☒ ⬅ Oxbridge - TLR proof read Tutor and Personal Statement & feedback ➡
- ☒ 18:00 - 21:00 Celebratory Awards Evening (Main Hall)

## 16 September

- ☐ ⬅ 00:00 Week B
- ☒ ⬅ 00:01 Oxbridge - TLR proof read Tutor and Personal Statement & feedback
- ☐ Deadline for remarks GCE AS Level
- ☐ Deadline for remarks GCSE
- ☐ Deadline UCAS student statements to tutors

## 17 September

## 18 September

**19 September 2011 -  
25 September 2011**

| September 2011 |    |    |    |    |    |    |
|----------------|----|----|----|----|----|----|
| Mo             | Tu | We | Th | Fr | Sa | Su |
|                |    |    |    | 1  | 2  | 3  |
| 5              | 6  | 7  | 8  | 9  | 10 | 11 |
| 12             | 13 | 14 | 15 | 16 | 17 | 18 |
| 19             | 20 | 21 | 22 | 23 | 24 | 25 |
| 26             | 27 | 28 | 29 | 30 |    |    |

| October 2011 |    |    |    |    |    |    |
|--------------|----|----|----|----|----|----|
| Mo           | Tu | We | Th | Fr | Sa | Su |
|              |    |    |    |    | 1  | 2  |
| 3            | 4  | 5  | 6  | 7  | 8  | 9  |
| 10           | 11 | 12 | 13 | 14 | 15 | 16 |
| 17           | 18 | 19 | 20 | 21 | 22 | 23 |
| 24           | 25 | 26 | 27 | 28 | 29 | 30 |
| 31           |    |    |    |    |    |    |

## 19 September

- ☐ 00:00 Week A ➡
- ☐ 00:00 Oxbridge Student amendments by Tutor/Student ➡
- ☐ 00:01 UCAS Statements checked by Tutors ➡

## 20 September

- ☐ ⬅ Week A ➡
- ☐ ⬅ 00:00 Oxbridge Student amendments by Tutor/Student ➡
- ☐ ⬅ UCAS Statements checked by Tutors ➡
- ☐ 08:30 - 16:00 NQT Induction
- ☒ 16:00 - 17:00 External Student Workshop

## 21 September

- ☐ ⬅ Week A ➡
- ☐ ⬅ UCAS Statements checked by Tutors ➡
- ☒ 16:00 - 17:30 Middle Leadership Team TADM

## 22 September

- ☐ ⬅ Week A ➡
- ☐ ⬅ UCAS Statements checked by Tutors ➡
- ☒ 09:00 - 10:15 House Assemblies
- ☒ 16:00 - 17:30 Arts Award Drama Performance (Drama Studio)

## 23 September

- ☐ ⬅ 00:00 Week A ➡
- ☐ ⬅ UCAS Statements checked by Tutors ➡
- ☐ School Council Elections
- ☒ 16:00 - 17:00 New Staff Drinks (Head's Office)

## 24 September

- ☐ ⬅ 00:01 UCAS Statements checked by Tutors ➡

## 25 September

**26 September 2011 -  
02 October 2011**

| September 2011 |    |    |    |    |    |    |
|----------------|----|----|----|----|----|----|
| Mo             | Tu | We | Th | Fr | Sa | Su |
|                |    |    |    | 1  | 2  | 3  |
| 5              | 6  | 7  | 8  | 9  | 10 | 11 |
| 12             | 13 | 14 | 15 | 16 | 17 | 18 |
| 19             | 20 | 21 | 22 | 23 | 24 | 25 |
| 26             | 27 | 28 | 29 | 30 |    |    |

| October 2011 |    |    |    |    |    |    |
|--------------|----|----|----|----|----|----|
| Mo           | Tu | We | Th | Fr | Sa | Su |
|              |    |    |    |    | 1  | 2  |
| 3            | 4  | 5  | 6  | 7  | 8  | 9  |
| 10           | 11 | 12 | 13 | 14 | 15 | 16 |
| 17           | 18 | 19 | 20 | 21 | 22 | 23 |
| 24           | 25 | 26 | 27 | 28 | 29 | 30 |
| 31           |    |    |    |    |    |    |

## 26 September

- ☐ 00:00 Week B ➡
- ☐ 00:00 Yr 8 Interform PE ➡
- ☐ 00:01 UCAS statements checked by Tutors ➡
- ☐ 00:01 SLT Sample check - Oxbridge Statements ➡
- ☐ European Day of Language
- ☐ Final deadline for November entries
- ☐ Meetings with Lead Teachers
- ☐ Whole School Committee Selection
- ☐ HT review of summer results with LT

## 27 September

- ☐ ⬅ Week B ➡
- ☐ ⬅ Yr 8 Interform PE ➡
- ☐ ⬅ SLT Sample check - Oxbridge Statements ➡
- ☐ ⬅ UCAS statements checked by Tutors ➡
- ☐ Eco-team Selection

## 28 September

- ☐ ⬅ Week B ➡
- ☐ ⬅ Yr 8 Interform PE ➡
- ☐ ⬅ SLT Sample check - Oxbridge Statements ➡
- ☐ ⬅ UCAS statements checked by Tutors ➡

## 29 September

- ☐ ⬅ Week B ➡
- ☐ ⬅ 00:00 Yr 8 Interform PE ➡
- ☐ ⬅ SLT Sample check - Oxbridge Statements ➡
- ☐ ⬅ UCAS statements checked by Tutors ➡

## 30 September

- ☐ ⬅ 00:00 Week B ➡
- ☐ ⬅ 00:01 SLT Sample check - Oxbridge Statements ➡
- ☐ ⬅ 00:01 UCAS statements checked by Tutors ➡
- ☒ 18:00 - 20:30 Open Evening

## 01 October

- ☐ 00:00 Yr 12 Geography Trip ➡

## 02 October

- ☐ ⬅ 00:00 Yr 12 Geography Trip ➡

**03 October 2011 -  
09 October 2011**

| October 2011 |    |    |    |    |    |     | November 2011 |    |    |    |    |    |    |
|--------------|----|----|----|----|----|-----|---------------|----|----|----|----|----|----|
| Mo           | Tu | We | Th | Fr | Sa | Su  | Mo            | Tu | We | Th | Fr | Sa | Su |
|              |    |    |    |    |    | 1 2 |               | 1  | 2  | 3  | 4  | 5  | 6  |
| 3            | 4  | 5  | 6  | 7  | 8  | 9   | 7             | 8  | 9  | 10 | 11 | 12 | 13 |
| 10           | 11 | 12 | 13 | 14 | 15 | 16  | 14            | 15 | 16 | 17 | 18 | 19 | 20 |
| 17           | 18 | 19 | 20 | 21 | 22 | 23  | 21            | 22 | 23 | 24 | 25 | 26 | 27 |
| 24           | 25 | 26 | 27 | 28 | 29 | 30  | 28            | 29 | 30 |    |    |    |    |
| 31           |    |    |    |    |    |     |               |    |    |    |    |    |    |

### 03 October

- ☐ 00:00 Week A →
- ☐ 00:01 TLR proof read Statements & feedback to Tutors →
- ☐ Black History Month
- ☐ Completed Department Action Plans (To Line Managers)
- ☐ Final Oxbridge changes & checks
- ☐ Newsletter Content Deadline

### 04 October

- ☐ ← Week A →
- ☐ ← TLR proof read Statements & feedback to Tutors →
- ☐ Extended Project Presentation
- ☒ 08:45 - 15:45 Staff Training Day 2

### 05 October

- ☐ ← Week A →
- ☐ ← TLR proof read Statements & feedback to Tutors →
- ☐ SWELTEC Induction begins
- ☒ 16:15 - 17:15 Whole staff TADM

### 06 October

- ☐ ← Week A →
- ☐ ← TLR proof read Statements & feedback to Tutors →
- ☐ Yr 8 HPV 1st vaccination

### 07 October

- ☐ ← 00:00 Week A
- ☐ ← 00:01 TLR proof read Statements & feedback to Tutors
- ☐ BTEC entries all Students in Yr10 and Yr12 for L1, 2, 3 Applied Courses (NCFE/BTEC) for Nov entries
- ☐ Committee, Election & Eco-team Training
- ☐ Oxbridge Submission Deadline

### 08 October

### 09 October

**10 October 2011 -  
16 October 2011**

| October 2011 |    |    |    |    |    |     | November 2011 |    |    |    |    |    |    |
|--------------|----|----|----|----|----|-----|---------------|----|----|----|----|----|----|
| Mo           | Tu | We | Th | Fr | Sa | Su  | Mo            | Tu | We | Th | Fr | Sa | Su |
|              |    |    |    |    |    | 1 2 |               | 1  | 2  | 3  | 4  | 5  | 6  |
| 3            | 4  | 5  | 6  | 7  | 8  | 9   | 7             | 8  | 9  | 10 | 11 | 12 | 13 |
| 10           | 11 | 12 | 13 | 14 | 15 | 16  | 14            | 15 | 16 | 17 | 18 | 19 | 20 |
| 17           | 18 | 19 | 20 | 21 | 22 | 23  | 21            | 22 | 23 | 24 | 25 | 26 | 27 |
| 24           | 25 | 26 | 27 | 28 | 29 | 30  | 28            | 29 | 30 |    |    |    |    |
| 31           |    |    |    |    |    |     |               |    |    |    |    |    |    |

## 10 October

- ☐ 00:00 Week B →
- ☐ 00:00 Yr 7 Interform PE →
- ☐ 00:01 TLR Proof read Statements & feedback to Tutors →
- ☐ Estimated entries for June 2011

## 11 October

- ☐ ← Week B →
- ☐ ← Yr 7 Interform PE →
- ☐ ← TLR Proof read Statements & feedback to Tutors →
- ☐ Extended Project Presentation
- ☐ NQT Induction
- ☐ Yr 12 spot check Report
- ☐ Yr 13 Report deadline

## 12 October

- ☐ ← Week B →
- ☐ ← Yr 7 Interform PE →
- ☐ ← TLR Proof read Statements & feedback to Tutors →

## 13 October

- ☐ ← Week B →
- ☐ ← 00:00 Yr 7 Interform PE
- ☐ ← TLR Proof read Statements & feedback to Tutors →
- ☐ Department Review SLT
- ☐ Yr 8 Catch - Up HPV 1st

## 14 October

- ☐ ← 00:00 Week B
- ☐ ← 00:00 TLR Proof read Statements & feedback to Tutors
- ☐ Entries for University tests
- ☐ January deadline for GCE/GCSE entries

## 15 October

## 16 October

**17 October 2011 -  
23 October 2011**

| October 2011 |    |    |    |    |    |    |
|--------------|----|----|----|----|----|----|
| Mo           | Tu | We | Th | Fr | Sa | Su |
|              |    |    |    |    | 1  | 2  |
| 3            | 4  | 5  | 6  | 7  | 8  | 9  |
| 10           | 11 | 12 | 13 | 14 | 15 | 16 |
| 17           | 18 | 19 | 20 | 21 | 22 | 23 |
| 24           | 25 | 26 | 27 | 28 | 29 | 30 |
| 31           |    |    |    |    |    |    |

| November 2011 |    |    |    |    |    |    |
|---------------|----|----|----|----|----|----|
| Mo            | Tu | We | Th | Fr | Sa | Su |
|               | 1  | 2  | 3  | 4  | 5  | 6  |
| 7             | 8  | 9  | 10 | 11 | 12 | 13 |
| 14            | 15 | 16 | 17 | 18 | 19 | 20 |
| 21            | 22 | 23 | 24 | 25 | 26 | 27 |
| 28            | 29 | 30 |    |    |    |    |

## 17 October

- ☐ 00:00 Week A →
- ☐ 00:00 Yr 9 Interform PE →
- ☐ UCAS Amendments by Tutors, TLRs to re-check

## 18 October

- ☐ ← Week A →
- ☐ ← Yr 9 Interform PE →
- ☐ Yr 11 report deadline

## 19 October

- ☐ ← Week A →
- ☐ ← Yr 9 Interform PE →

## 20 October

- ☐ ← Week A →
- ☐ ← 00:00 Yr 9 Interform PE
- ☒ 18:00 - 20:30 Yr 13 Curriculum/Parents Evening (6th Form Building)

## 21 October

- ☐ ← 00:00 Week A
- ☐ Final UCAS Deadline for all UCAS Statements

## 22 October

## 23 October

**24 October 2011 -  
30 October 2011**

| October 2011 |    |    |    |    |    |    |
|--------------|----|----|----|----|----|----|
| Mo           | Tu | We | Th | Fr | Sa | Su |
|              |    |    |    |    | 1  | 2  |
| 3            | 4  | 5  | 6  | 7  | 8  | 9  |
| 10           | 11 | 12 | 13 | 14 | 15 | 16 |
| 17           | 18 | 19 | 20 | 21 | 22 | 23 |
| 24           | 25 | 26 | 27 | 28 | 29 | 30 |
| 31           |    |    |    |    |    |    |

| November 2011 |    |    |    |    |    |    |
|---------------|----|----|----|----|----|----|
| Mo            | Tu | We | Th | Fr | Sa | Su |
|               | 1  | 2  | 3  | 4  | 5  | 6  |
| 7             | 8  | 9  | 10 | 11 | 12 | 13 |
| 14            | 15 | 16 | 17 | 18 | 19 | 20 |
| 21            | 22 | 23 | 24 | 25 | 26 | 27 |
| 28            | 29 | 30 |    |    |    |    |

**24 October**

☐ 00:00 Half Term →

**25 October**

☐ ← Half Term →

**26 October**

☐ ← Half Term →

**27 October**

☐ ← Half Term →

☐ Diwali

**28 October**

☐ ← 00:00 Half Term

**29 October**

**30 October**



**31 October 2011 -  
06 November 2011**

| October 2011 |    |    |    |    |    |    |
|--------------|----|----|----|----|----|----|
| Mo           | Tu | We | Th | Fr | Sa | Su |
|              |    |    |    |    | 1  | 2  |
| 3            | 4  | 5  | 6  | 7  | 8  | 9  |
| 10           | 11 | 12 | 13 | 14 | 15 | 16 |
| 17           | 18 | 19 | 20 | 21 | 22 | 23 |
| 24           | 25 | 26 | 27 | 28 | 29 | 30 |
| 31           |    |    |    |    |    |    |

| November 2011 |    |    |    |    |    |    |
|---------------|----|----|----|----|----|----|
| Mo            | Tu | We | Th | Fr | Sa | Su |
|               | 1  | 2  | 3  | 4  | 5  | 6  |
| 7             | 8  | 9  | 10 | 11 | 12 | 13 |
| 14            | 15 | 16 | 17 | 18 | 19 | 20 |
| 21            | 22 | 23 | 24 | 25 | 26 | 27 |
| 28            | 29 | 30 |    |    |    |    |

## 31 October

- ☐ 00:00 Week B →
- ☒ All PDR documentation completed
- ☐ Review of "Red Students" KS4 & KS5 in department meetings

## 01 November

- ☐ ← Week B →
- ☐ NQT Induction

## 02 November

- ☐ ← Week B →

## 03 November

- ☐ ← Week B →
- ☒ 18:30 - 20:30 Yr11 Curriculum Evening/6th Form Open Evening

## 04 November

- ☐ ← 00:00 Week B
- ☐ Final date for Coursework samples & marks for Nov GCSE

## 05 November

## 06 November

**07 November 2011 -  
13 November 2011**

| November 2011 |    |    |    |    |    |    |
|---------------|----|----|----|----|----|----|
| Mo            | Tu | We | Th | Fr | Sa | Su |
|               | 1  | 2  | 3  | 4  | 5  | 6  |
| 7             | 8  | 9  | 10 | 11 | 12 | 13 |
| 14            | 15 | 16 | 17 | 18 | 19 | 20 |
| 21            | 22 | 23 | 24 | 25 | 26 | 27 |
| 28            | 29 | 30 |    |    |    |    |

| December 2011 |    |    |    |    |    |    |
|---------------|----|----|----|----|----|----|
| Mo            | Tu | We | Th | Fr | Sa | Su |
|               |    |    | 1  | 2  | 3  | 4  |
| 5             | 6  | 7  | 8  | 9  | 10 | 11 |
| 12            | 13 | 14 | 15 | 16 | 17 | 18 |
| 19            | 20 | 21 | 22 | 23 | 24 | 25 |
| 26            | 27 | 28 | 29 | 30 | 31 |    |

## 07 November

- ☐ 00:00 Week A ➡
- ☐ 00:00 SLT Marking Audit ➡
- ☒ 00:01 SLT sample check & feedback UCAS Statements to TLRs ➡
- ☐ Occasional Day Holiday

## 08 November

- ☐ ⬅ Week A ➡
- ☐ ⬅ 00:00 SLT Marking Audit ➡
- ☒ ⬅ SLT sample check & feedback UCAS Statements to TLRs ➡
- ☐ GCSE Science Exam (PM)
- ☐ Yr10 Booster Vaccination

## 09 November

- ☐ ⬅ Week A ➡
- ☒ ⬅ SLT sample check & feedback UCAS Statements to TLRs ➡
- ☐ GCSE Maths
- ☐ 16:15 - 17:15 Whole Staff TADM

## 10 November

- ☐ ⬅ Week A ➡
- ☒ ⬅ SLT sample check & feedback UCAS Statements to TLRs ➡
- ☒ 18:30 - 20:00 Sports Awards Evening (Main Hall)

## 11 November

- ☐ ⬅ 00:00 Week A ➡
- ☒ ⬅ 00:00 SLT sample check & feedback UCAS Statements to TLRs ➡
- ☐ Armistice Day

## 12 November

## 13 November

**14 November 2011 -  
20 November 2011**

| November 2011 |    |    |    |    |    |    |
|---------------|----|----|----|----|----|----|
| Mo            | Tu | We | Th | Fr | Sa | Su |
|               |    | 1  | 2  | 3  | 4  | 5  |
| 6             | 7  | 8  | 9  | 10 | 11 | 12 |
| 13            | 14 | 15 | 16 | 17 | 18 | 19 |
| 20            | 21 | 22 | 23 | 24 | 25 | 26 |
| 27            | 28 | 29 | 30 |    |    |    |

| December 2011 |    |    |    |    |    |    |
|---------------|----|----|----|----|----|----|
| Mo            | Tu | We | Th | Fr | Sa | Su |
|               |    |    |    | 1  | 2  | 3  |
| 4             | 5  | 6  | 7  | 8  | 9  | 10 |
| 11            | 12 | 13 | 14 | 15 | 16 | 17 |
| 18            | 19 | 20 | 21 | 22 | 23 | 24 |
| 25            | 26 | 27 | 28 | 29 | 30 | 31 |

## 14 November

- ☐ 00:00 Week B →
- ☐ 00:00 Yr 8 Interform PE →
- ☒ 00:01 SLT sample check & feedback UCAS Statements to TLRs →
- ☐ Anti-Bullying Week
- ☐ Coursework submission for Jan exams
- ☐ GCSE Maths Exam
- ☐ GCSE Science Exam

## 15 November

- ☐ ← Week B →
- ☐ ← Yr 8 Interform PE →
- ☒ ← SLT sample check & feedback UCAS Statements to TLRs →
- ☐ GCSE Science Exam resits
- ☐ Yr 9 & 12 Report Deadline

## 16 November

- ☐ ← Week B →
- ☐ ← Yr 8 Interform PE →
- ☒ ← SLT sample check & feedback UCAS Statements to TLRs →
- ☐ 16:00 - 17:30 Middle Management Team TADM

## 17 November

- ☐ ← Week B →
- ☐ ← 00:00 Yr 8 Interform PE →
- ☒ ← SLT sample check & feedback UCAS Statements to TLRs →
- ☐ GCSE Music Performance Showcase
- ☒ 09:00 - 10:15 House Assemblies

## 18 November

- ☐ ← 00:00 Week B →
- ☒ ← 00:00 SLT sample check & feedback UCAS Statements to TLRs →

## 19 November

## 20 November

**21 November 2011 -  
27 November 2011**

| November 2011 |    |    |    |    |    |    |
|---------------|----|----|----|----|----|----|
| Mo            | Tu | We | Th | Fr | Sa | Su |
|               | 1  | 2  | 3  | 4  | 5  | 6  |
| 7             | 8  | 9  | 10 | 11 | 12 | 13 |
| 14            | 15 | 16 | 17 | 18 | 19 | 20 |
| 21            | 22 | 23 | 24 | 25 | 26 | 27 |
| 28            | 29 | 30 |    |    |    |    |

| December 2011 |    |    |    |    |    |    |
|---------------|----|----|----|----|----|----|
| Mo            | Tu | We | Th | Fr | Sa | Su |
|               |    |    | 1  | 2  | 3  | 4  |
| 5             | 6  | 7  | 8  | 9  | 10 | 11 |
| 12            | 13 | 14 | 15 | 16 | 17 | 18 |
| 19            | 20 | 21 | 22 | 23 | 24 | 25 |
| 26            | 27 | 28 | 29 | 30 | 31 |    |

## 21 November

- ☐ 00:00 Week A ➡
- ☒ 00:01 Curriculum Week 1 ➡
- ☐ 00:02 Upload UCAS Statements ➡
- ☐ Upload UCAS Statements

## 22 November

- ☐ ⬅ Week A ➡
- ☒ ⬅ Curriculum Week 1 ➡
- ☐ ⬅ Upload UCAS Statements ➡
- ☐ 00:00 Creative Music Task (TBC) ➡

## 23 November

- ☐ ⬅ Week A ➡
- ☒ ⬅ Curriculum Week 1 ➡
- ☐ ⬅ Upload UCAS Statements ➡
- ☐ ⬅ 00:00 Creative Music Task (TBC)

## 24 November

- ☐ ⬅ Week A ➡
- ☒ ⬅ Curriculum Week 1 ➡
- ☐ ⬅ Upload UCAS Statements ➡

## 25 November

- ☐ ⬅ 00:00 Week A
- ☒ ⬅ 15:31 Curriculum Week 1
- ☐ ⬅ Upload UCAS Statements ➡
- ☐ MBE Day
- ☒ 09:00 - 14:30 Sociology Conference

## 26 November

- ☐ ⬅ 00:02 Upload UCAS Statements
- ☐ 00:00 Trip to Lille (TBC) ➡

## 27 November

- ☐ ⬅ 00:00 Trip to Lille (TBC)

**28 November 2011 -  
04 December 2011**

| November 2011 |    |    |    |    |    |    |
|---------------|----|----|----|----|----|----|
| Mo            | Tu | We | Th | Fr | Sa | Su |
|               |    | 1  | 2  | 3  | 4  | 5  |
| 6             | 7  | 8  | 9  | 10 | 11 | 12 |
| 13            | 14 | 15 | 16 | 17 | 18 | 19 |
| 20            | 21 | 22 | 23 | 24 | 25 | 26 |
| 27            | 28 | 29 | 30 |    |    |    |

| December 2011 |    |    |    |    |    |    |
|---------------|----|----|----|----|----|----|
| Mo            | Tu | We | Th | Fr | Sa | Su |
|               |    |    | 1  | 2  | 3  | 4  |
| 5             | 6  | 7  | 8  | 9  | 10 | 11 |
| 12            | 13 | 14 | 15 | 16 | 17 | 18 |
| 19            | 20 | 21 | 22 | 23 | 24 | 25 |
| 26            | 27 | 28 | 29 | 30 | 31 |    |

## 28 November

- ☐ 00:00 Week A →
- ☐ 00:00 Yr 7 Interform PE →
- ☐ Form Council Meeting
- ☐ Newsletter Content Deadline

## 29 November

- ☐ ← Week A →
- ☐ ← Yr 7 Interform PE →

## 30 November

- ☐ ← Week A →
- ☐ ← Yr 7 Interform PE →

## 01 December

- ☐ ← Week A →
- ☐ ← 00:00 Yr 7 Interform PE
- ☐ World AIDS Day
- ☐ Year Council
- ☐ Yr 8 HPV 2nd Vaccination
- ☒ 18:30 - 20:30 Yr 9 Options Evening (Main Hall)

## 02 December

- ☐ ← 00:00 Week A

## 03 December

## 04 December

**05 December 2011 -  
11 December 2011**

| December 2011 |    |    |    |    |    |    |
|---------------|----|----|----|----|----|----|
| Mo            | Tu | We | Th | Fr | Sa | Su |
|               |    |    |    | 1  | 2  | 3  |
| 5             | 6  | 7  | 8  | 9  | 10 | 11 |
| 12            | 13 | 14 | 15 | 16 | 17 | 18 |
| 19            | 20 | 21 | 22 | 23 | 24 | 25 |
| 26            | 27 | 28 | 29 | 30 | 31 |    |

| January 2012 |    |    |    |    |    |    |
|--------------|----|----|----|----|----|----|
| Mo           | Tu | We | Th | Fr | Sa | Su |
|              |    |    |    |    |    | 1  |
| 2            | 3  | 4  | 5  | 6  | 7  | 8  |
| 9            | 10 | 11 | 12 | 13 | 14 | 15 |
| 16           | 17 | 18 | 19 | 20 | 21 | 22 |
| 23           | 24 | 25 | 26 | 27 | 28 | 29 |
| 30           | 31 |    |    |    |    |    |

## 05 December

- ☐ 00:00 Week B →
- ☐ 00:00 Yr 9 Interform PE →
- ☐ 00:01 Book Fair Week →
- ☐ School Council meet Head

## 06 December

- ☐ ← Week B →
- ☐ ← Yr 9 Interform PE →
- ☐ ← Book Fair Week →
- ☐ NQT Induction

## 07 December

- ☐ ← Week B →
- ☐ ← Yr 9 Interform PE →
- ☐ ← Book Fair Week →
- ☒ 16:00 - 17:30 KS3 Showcase Performing Arts

## 08 December

- ☐ ← Week B →
- ☐ ← 00:00 Yr 9 Interform PE
- ☐ ← Book Fair Week →
- ☐ Yr 10 Assesment Deadline
- ☐ Yr 12 Curriculum Evening
- ☐ Yr 8 Catch up-Up HPV 2nd

## 09 December

- ☐ ← 00:00 Week B
- ☐ ← 00:00 Book Fair Week

## 10 December

## 11 December

**12 December 2011 -  
18 December 2011**

| December 2011 |    |    |    |    |    |    |
|---------------|----|----|----|----|----|----|
| Mo            | Tu | We | Th | Fr | Sa | Su |
|               |    |    |    | 1  | 2  | 3  |
| 4             | 5  | 6  | 7  | 8  | 9  | 10 |
| 11            | 12 | 13 | 14 | 15 | 16 | 17 |
| 18            | 19 | 20 | 21 | 22 | 23 | 24 |
| 25            | 26 | 27 | 28 | 29 | 30 | 31 |

| January 2012 |    |    |    |    |    |    |
|--------------|----|----|----|----|----|----|
| Mo           | Tu | We | Th | Fr | Sa | Su |
|              |    |    |    |    |    | 1  |
| 2            | 3  | 4  | 5  | 6  | 7  | 8  |
| 9            | 10 | 11 | 12 | 13 | 14 | 15 |
| 16           | 17 | 18 | 19 | 20 | 21 | 22 |
| 23           | 24 | 25 | 26 | 27 | 28 | 29 |
| 30           | 31 |    |    |    |    |    |

## 12 December

- ☐ 00:00 Week A →
- ☐ Yr 7 and 8 Report Deadline

## 13 December

- ☐ ← Week A →
- ☐ Yr 11 & 13 Report Deadline

## 14 December

- ☐ ← Week A →
- ☐ 16:15 - 17:15 Whole Staff TADM

## 15 December

- ☐ ← Week A →

## 16 December

- ☐ ← 00:00 Week A
- ☐ Last Day of Term
- ☐ SWELTEC Ends

## 17 December

## 18 December

**19 December 2011 -  
25 December 2011**

| December 2011 |    |    |    |    |    |    |
|---------------|----|----|----|----|----|----|
| Mo            | Tu | We | Th | Fr | Sa | Su |
|               |    |    | 1  | 2  | 3  | 4  |
| 5             | 6  | 7  | 8  | 9  | 10 | 11 |
| 12            | 13 | 14 | 15 | 16 | 17 | 18 |
| 19            | 20 | 21 | 22 | 23 | 24 | 25 |
| 26            | 27 | 28 | 29 | 30 | 31 |    |

| January 2012 |    |    |    |    |    |    |
|--------------|----|----|----|----|----|----|
| Mo           | Tu | We | Th | Fr | Sa | Su |
|              |    |    |    |    |    | 1  |
| 2            | 3  | 4  | 5  | 6  | 7  | 8  |
| 9            | 10 | 11 | 12 | 13 | 14 | 15 |
| 16           | 17 | 18 | 19 | 20 | 21 | 22 |
| 23           | 24 | 25 | 26 | 27 | 28 | 29 |
| 30           | 31 |    |    |    |    |    |

**19 December**

☐ 00:00 Christmas Holiday ➡

**20 December**

☐ ⬅ Christmas Holiday ➡

**21 December**

☐ ⬅ Christmas Holiday ➡

**22 December**

☐ ⬅ Christmas Holiday ➡

**23 December**

☐ ⬅ Christmas Holiday ➡

**24 December**

☐ ⬅ Christmas Holiday ➡

**25 December**

☐ ⬅ Christmas Holiday ➡



**26 December 2011 -  
01 January 2012**

| December 2011 |    |    |    |    |    |    |
|---------------|----|----|----|----|----|----|
| Mo            | Tu | We | Th | Fr | Sa | Su |
|               |    |    | 1  | 2  | 3  | 4  |
| 5             | 6  | 7  | 8  | 9  | 10 | 11 |
| 12            | 13 | 14 | 15 | 16 | 17 | 18 |
| 19            | 20 | 21 | 22 | 23 | 24 | 25 |
| 26            | 27 | 28 | 29 | 30 | 31 |    |

| January 2012 |    |    |    |    |    |    |
|--------------|----|----|----|----|----|----|
| Mo           | Tu | We | Th | Fr | Sa | Su |
|              |    |    |    |    |    | 1  |
| 2            | 3  | 4  | 5  | 6  | 7  | 8  |
| 9            | 10 | 11 | 12 | 13 | 14 | 15 |
| 16           | 17 | 18 | 19 | 20 | 21 | 22 |
| 23           | 24 | 25 | 26 | 27 | 28 | 29 |
| 30           | 31 |    |    |    |    |    |

**26 December**

☐ Christmas Holiday ➡

**27 December**

☐ Christmas Holiday ➡

**28 December**

☐ Christmas Holiday ➡

**29 December**

☐ Christmas Holiday ➡

**30 December**

☐ Christmas Holiday ➡

**31 December**

☐ Christmas Holiday ➡

**01 January**

☐ Christmas Holiday ➡

**02 January 2012 -  
08 January 2012**

| January 2012 |    |    |    |    |    |    |
|--------------|----|----|----|----|----|----|
| Mo           | Tu | We | Th | Fr | Sa | Su |
|              |    |    |    |    |    | 1  |
| 2            | 3  | 4  | 5  | 6  | 7  | 8  |
| 9            | 10 | 11 | 12 | 13 | 14 | 15 |
| 16           | 17 | 18 | 19 | 20 | 21 | 22 |
| 23           | 24 | 25 | 26 | 27 | 28 | 29 |
| 30           | 31 |    |    |    |    |    |

| February 2012 |    |    |    |    |    |    |
|---------------|----|----|----|----|----|----|
| Mo            | Tu | We | Th | Fr | Sa | Su |
|               |    |    | 1  | 2  | 3  | 4  |
| 5             | 6  | 7  | 8  | 9  | 10 | 11 |
| 12            | 13 | 14 | 15 | 16 | 17 | 18 |
| 19            | 20 | 21 | 22 | 23 | 24 | 25 |
| 26            | 27 | 28 | 29 |    |    |    |

**02 January**

☐ 00:00 Christmas Holiday

**03 January**

☐ 00:00 Week B

☐ Return to School

**04 January**

☐ Week B

☐ 16:15 - 17:15 Whole School TADM

**05 January**

☐ Week B

**06 January**

☐ 00:00 Week B

**07 January**

**08 January**

**09 January 2012 -  
15 January 2012**

| January 2012 |    |    |    |    |    |    | February 2012 |    |    |    |    |    |    |
|--------------|----|----|----|----|----|----|---------------|----|----|----|----|----|----|
| Mo           | Tu | We | Th | Fr | Sa | Su | Mo            | Tu | We | Th | Fr | Sa | Su |
|              |    |    |    |    |    | 1  |               |    | 1  | 2  | 3  | 4  | 5  |
| 2            | 3  | 4  | 5  | 6  | 7  | 8  | 6             | 7  | 8  | 9  | 10 | 11 | 12 |
| 9            | 10 | 11 | 12 | 13 | 14 | 15 | 13            | 14 | 15 | 16 | 17 | 18 | 19 |
| 16           | 17 | 18 | 19 | 20 | 21 | 22 | 20            | 21 | 22 | 23 | 24 | 25 | 26 |
| 23           | 24 | 25 | 26 | 27 | 28 | 29 | 27            | 28 | 29 |    |    |    |    |
| 30           | 31 |    |    |    |    |    |               |    |    |    |    |    |    |

### 09 January

- ☐ 00:00 Week A ➡
- ☐ Review of "Red Students" KS4 & KS5 in Department meetings

### 10 January

- ☐ ← Week A ➡
- ☒ 00:01 GCSE & GCE Modular Exams ➡
- ☐ Final date for estimated Grades & Coursework

### 11 January

- ☐ ← Week A ➡
- ☒ ← GCSE & GCE Modular Exams ➡
- ☐ AS Biology Exam a.m.

### 12 January

- ☐ ← Week A ➡
- ☒ ← GCSE & GCE Modular Exams ➡
- ☐ GCSE Results Day

### 13 January

- ☐ ← 00:00 Week A ➡
- ☒ ← GCSE & GCE Modular Exams ➡
- ☐ AS Chemistry Exam a.m.
- ☐ Results released to Students

### 14 January

- ☒ ← GCSE & GCE Modular Exams ➡
- ☐ March GCSE entries

### 15 January

- ☒ ← GCSE & GCE Modular Exams ➡

**16 January 2012 -  
22 January 2012**

| January 2012 |    |    |    |    |    |    | February 2012 |    |    |    |    |    |    |
|--------------|----|----|----|----|----|----|---------------|----|----|----|----|----|----|
| Mo           | Tu | We | Th | Fr | Sa | Su | Mo            | Tu | We | Th | Fr | Sa | Su |
|              |    |    |    |    |    | 1  |               |    | 1  | 2  | 3  | 4  | 5  |
| 2            | 3  | 4  | 5  | 6  | 7  | 8  | 6             | 7  | 8  | 9  | 10 | 11 | 12 |
| 9            | 10 | 11 | 12 | 13 | 14 | 15 | 13            | 14 | 15 | 16 | 17 | 18 | 19 |
| 16           | 17 | 18 | 19 | 20 | 21 | 22 | 20            | 21 | 22 | 23 | 24 | 25 | 26 |
| 23           | 24 | 25 | 26 | 27 | 28 | 29 | 27            | 28 | 29 |    |    |    |    |
| 30           | 31 |    |    |    |    |    |               |    |    |    |    |    |    |

## 16 January

- ☒ GCSE & GCE Modular Exams →
- ☐ 00:00 Week B →
- ☐ 00:00 Yr 7 Interform PE →
- ☐ Form Council

## 17 January

- ☒ GCSE & GCE Modular Exams →
- ☐ Week B →
- ☐ Yr 7 Interform PE →

## 18 January

- ☒ GCSE & GCE Modular Exams →
- ☐ Week B →
- ☐ Yr 7 Interform PE →
- ☐ AS Chemistry Exam
- ☐ SWELTEC Induction begins

## 19 January

- ☒ GCSE & GCE Modular Exams →
- ☐ Week B →
- ☐ 00:00 Yr 7 Interform PE
- ☐ Year Council
- ☒ 18:30 - 20:30 Yr10 Curriculum Evening

## 20 January

- ☒ GCSE & GCE Modular Exams →
- ☐ 00:00 Week B

## 21 January

- ☒ GCSE & GCE Modular Exams →

## 22 January

- ☒ GCSE & GCE Modular Exams →

**23 January 2012 -  
29 January 2012**

| January 2012 |    |    |    |    |    |    | February 2012 |    |    |    |    |    |    |
|--------------|----|----|----|----|----|----|---------------|----|----|----|----|----|----|
| Mo           | Tu | We | Th | Fr | Sa | Su | Mo            | Tu | We | Th | Fr | Sa | Su |
|              |    |    |    |    |    | 1  |               |    | 1  | 2  | 3  | 4  | 5  |
| 2            | 3  | 4  | 5  | 6  | 7  | 8  | 6             | 7  | 8  | 9  | 10 | 11 | 12 |
| 9            | 10 | 11 | 12 | 13 | 14 | 15 | 13            | 14 | 15 | 16 | 17 | 18 | 19 |
| 16           | 17 | 18 | 19 | 20 | 21 | 22 | 20            | 21 | 22 | 23 | 24 | 25 | 26 |
| 23           | 24 | 25 | 26 | 27 | 28 | 29 | 27            | 28 | 29 |    |    |    |    |
| 30           | 31 |    |    |    |    |    |               |    |    |    |    |    |    |

## 23 January

- ☒ GCSE & GCE Modular Exams →
- ☐ 00:00 Week A →
- ☐ Newsletter Content Deadline
- ☐ School Council

## 24 January

- ☒ GCSE & GCE Modular Exams →
- ☐ Week A →
- ☐ SLT Review on non entries Yr11

## 25 January

- ☒ GCSE & GCE Modular Exams →
- ☐ Week A →
- ☐ A2 Biology Exam p.m.
- ☐ 16:00 - 17:30 Middle Leadership Team TADM

## 26 January

- ☒ GCSE & GCE Modular Exams →
- ☐ Week A →
- ☐ A2 Chemistry Exam
- ☐ 09:00 - 10:15 House Assemblies

## 27 January

- ☒ GCSE & GCE Modular Exams →
- ☐ 00:00 Week A
- ☐ Holocaust Memorial Day

## 28 January

- ☒ GCSE & GCE Modular Exams →

## 29 January

- ☒ GCSE & GCE Modular Exams →

**30 January 2012 -  
05 February 2012**

| January 2012 |    |    |    |    |    |    | February 2012 |    |    |    |    |    |    |
|--------------|----|----|----|----|----|----|---------------|----|----|----|----|----|----|
| Mo           | Tu | We | Th | Fr | Sa | Su | Mo            | Tu | We | Th | Fr | Sa | Su |
|              |    |    |    |    |    | 1  |               |    | 1  | 2  | 3  | 4  | 5  |
| 2            | 3  | 4  | 5  | 6  | 7  | 8  | 6             | 7  | 8  | 9  | 10 | 11 | 12 |
| 9            | 10 | 11 | 12 | 13 | 14 | 15 | 13            | 14 | 15 | 16 | 17 | 18 | 19 |
| 16           | 17 | 18 | 19 | 20 | 21 | 22 | 20            | 21 | 22 | 23 | 24 | 25 | 26 |
| 23           | 24 | 25 | 26 | 27 | 28 | 29 | 27            | 28 | 29 |    |    |    |    |
| 30           | 31 |    |    |    |    |    |               |    |    |    |    |    |    |

### 30 January

- ☒ ⇐ GCSE & GCE Modular Exams ⇒
- ☐ ⇐ 00:00 Week B ⇒
- ☐ ⇐ 00:00 Yr 9 Interform PE ⇒

### 31 January

- ☒ ⇐ GCSE & GCE Modular Exams ⇒
- ☐ ⇐ Week B ⇒
- ☐ ⇐ Yr 9 Interform PE ⇒

### 01 February

- ☒ ⇐ GCSE & GCE Modular Exams ⇒
- ☐ ⇐ Week B ⇒
- ☐ ⇐ Yr 9 Interform PE ⇒

### 02 February

- ☒ ⇐ GCSE & GCE Modular Exams ⇒
- ☐ ⇐ Week B ⇒
- ☐ ⇐ 00:00 Yr 9 Interform PE
- ☐ Department Review SLT
- ☒ 18:30 - 20:30 Yr 7 Curriculum Evening

### 03 February

- ☒ ⇐ 00:01 GCSE & GCE Modular Exams
- ☐ ⇐ 00:00 Week B

### 04 February

### 05 February

**06 February 2012 -  
12 February 2012**

| February 2012 |    |    |    |    |    |    |
|---------------|----|----|----|----|----|----|
| Mo            | Tu | We | Th | Fr | Sa | Su |
|               |    |    | 1  | 2  | 3  | 4  |
| 5             | 6  | 7  | 8  | 9  | 10 | 11 |
| 12            | 13 | 14 | 15 | 16 | 17 | 18 |
| 19            | 20 | 21 | 22 | 23 | 24 | 25 |
| 26            | 27 | 28 | 29 |    |    |    |

| March 2012 |    |    |    |    |    |    |
|------------|----|----|----|----|----|----|
| Mo         | Tu | We | Th | Fr | Sa | Su |
|            |    |    | 1  | 2  | 3  | 4  |
| 5          | 6  | 7  | 8  | 9  | 10 | 11 |
| 12         | 13 | 14 | 15 | 16 | 17 | 18 |
| 19         | 20 | 21 | 22 | 23 | 24 | 25 |
| 26         | 27 | 28 | 29 | 30 | 31 |    |

## 06 February

- ☐ 00:00 Week A →
- ☐ Yr 11 & 13 Report deadline

## 07 February

- ☐ ← Week A →
- ☐ Yr 10 and Yr12 Report deadline

## 08 February

- ☐ ← Week A →
- ☒ 08:30 - 15:30 Winter Concert Rehearsal
- ☒ 18:30 - 20:30 Winter Concert Performance

## 09 February

- ☐ ← Week A →
- ☐ 00:00 KS4 trip to Paris →
- ☐ 00:00 KS5 trip to Brussels →
- ☐ Annual Valentine disco & Muffi day

## 10 February

- ☐ ← 00:00 Week A →
- ☐ ← KS4 trip to Paris →
- ☐ ← KS5 trip to Brussels →
- ☒ 08:45 - 15:45 Staff Training Day 3

## 11 February

- ☐ ← KS4 trip to Paris →
- ☐ ← KS5 trip to Brussels →

## 12 February

- ☐ ← 00:00 KS4 trip to Paris
- ☐ ← 00:00 KS5 trip to Brussels

**13 February 2012 -  
19 February 2012**

| February 2012 |    |    |    |    |    |    |
|---------------|----|----|----|----|----|----|
| Mo            | Tu | We | Th | Fr | Sa | Su |
|               |    |    | 1  | 2  | 3  | 4  |
| 5             | 6  | 7  | 8  | 9  | 10 | 11 |
| 12            | 13 | 14 | 15 | 16 | 17 | 18 |
| 19            | 20 | 21 | 22 | 23 | 24 | 25 |
| 26            | 27 | 28 | 29 |    |    |    |

| March 2012 |    |    |    |    |    |    |
|------------|----|----|----|----|----|----|
| Mo         | Tu | We | Th | Fr | Sa | Su |
|            |    |    |    | 1  | 2  | 3  |
| 4          | 5  | 6  | 7  | 8  | 9  | 10 |
| 11         | 12 | 13 | 14 | 15 | 16 | 17 |
| 18         | 19 | 20 | 21 | 22 | 23 | 24 |
| 25         | 26 | 27 | 28 | 29 | 30 | 31 |

**13 February**

☐ 00:00 Half Term →

☐ Entry deadline for June GCSE

**14 February**

☐ ← Half Term →

**15 February**

☐ ← Half Term →

**16 February**

☐ ← Half Term →

**17 February**

☐ ← Half Term →

**18 February**

☐ ← Half Term →

**19 February**

☐ ← 00:00 Half Term



**20 February 2012 -  
26 February 2012**

| February 2012 |    |    |    |    |    |    |
|---------------|----|----|----|----|----|----|
| Mo            | Tu | We | Th | Fr | Sa | Su |
|               |    |    | 1  | 2  | 3  | 4  |
| 5             | 6  | 7  | 8  | 9  | 10 | 11 |
| 12            | 13 | 14 | 15 | 16 | 17 | 18 |
| 19            | 20 | 21 | 22 | 23 | 24 | 25 |
| 26            | 27 | 28 | 29 |    |    |    |

| March 2012 |    |    |    |    |    |    |
|------------|----|----|----|----|----|----|
| Mo         | Tu | We | Th | Fr | Sa | Su |
|            |    |    | 1  | 2  | 3  | 4  |
| 5          | 6  | 7  | 8  | 9  | 10 | 11 |
| 12         | 13 | 14 | 15 | 16 | 17 | 18 |
| 19         | 20 | 21 | 22 | 23 | 24 | 25 |
| 26         | 27 | 28 | 29 | 30 | 31 |    |

## 20 February

☐ 00:00 Week B →

☐ Review of "Red Students" KS4 & KS5 in  
Department meeting

## 21 February

☐ ← Week B →

☐ SLT Marketing Audit

## 22 February

☐ ← Week B →

## 23 February

☐ ← Week B →

## 24 February

☐ ← 00:00 Week B

☐ PDR mid-year review completed

## 25 February

## 26 February

**27 February 2012 -  
04 March 2012**

| February 2012 |    |    |    |    |    |    |
|---------------|----|----|----|----|----|----|
| Mo            | Tu | We | Th | Fr | Sa | Su |
|               |    |    | 1  | 2  | 3  | 4  |
| 5             | 6  | 7  | 8  | 9  | 10 | 11 |
| 12            | 13 | 14 | 15 | 16 | 17 | 18 |
| 19            | 20 | 21 | 22 | 23 | 24 | 25 |
| 26            | 27 | 28 | 29 |    |    |    |

| March 2012 |    |    |    |    |    |    |
|------------|----|----|----|----|----|----|
| Mo         | Tu | We | Th | Fr | Sa | Su |
|            |    |    | 1  | 2  | 3  | 4  |
| 5          | 6  | 7  | 8  | 9  | 10 | 11 |
| 12         | 13 | 14 | 15 | 16 | 17 | 18 |
| 19         | 20 | 21 | 22 | 23 | 24 | 25 |
| 26         | 27 | 28 | 29 | 30 | 31 |    |

**27 February**

- ☐ 00:00 Week A →
- ☐ 00:00 Yr 8 Interform PE →

**28 February**

- ☐ ← Week A →
- ☐ ← Yr 8 Interform PE →

**29 February**

- ☐ ← Week A →
- ☐ ← Yr 8 Interform PE →
- ☐ 16:00 - 17:15 Middle Leadership Team TADM

**01 March**

- ☐ ← Week A →
- ☐ ← 00:00 Yr 8 Interform PE
- ☐ World Book Day

**02 March**

- ☐ ← 00:00 Week A

**03 March**

**04 March**

**05 March 2012 -  
11 March 2012**

| March 2012 |    |    |    |    |    |    |
|------------|----|----|----|----|----|----|
| Mo         | Tu | We | Th | Fr | Sa | Su |
|            |    |    | 1  | 2  | 3  | 4  |
| 5          | 6  | 7  | 8  | 9  | 10 | 11 |
| 12         | 13 | 14 | 15 | 16 | 17 | 18 |
| 19         | 20 | 21 | 22 | 23 | 24 | 25 |
| 26         | 27 | 28 | 29 | 30 | 31 |    |

| April 2012 |    |    |    |    |    |    |
|------------|----|----|----|----|----|----|
| Mo         | Tu | We | Th | Fr | Sa | Su |
|            |    |    |    |    |    | 1  |
| 2          | 3  | 4  | 5  | 6  | 7  | 8  |
| 9          | 10 | 11 | 12 | 13 | 14 | 15 |
| 16         | 17 | 18 | 19 | 20 | 21 | 22 |
| 23         | 24 | 25 | 26 | 27 | 28 | 29 |
| 30         |    |    |    |    |    |    |

**05 March**

☐ 00:00 Week B →

**06 March**

☐ ← Week B →

☐ Yr8 Report deadline

**07 March**

☐ ← Week B →

☒ 16:15 - Whole School TADM

**08 March**

☐ ← Week B →

☐ GCE & GCSE Results Day

☒ 09:00 - 10:15 House Assemblies

**09 March**

☐ ← 00:00 Week B

**10 March**

**11 March**

**12 March 2012 -  
18 March 2012**

| March 2012 |    |    |    |    |    |    |
|------------|----|----|----|----|----|----|
| Mo         | Tu | We | Th | Fr | Sa | Su |
|            |    |    |    | 1  | 2  | 3  |
| 5          | 6  | 7  | 8  | 9  | 10 | 11 |
| 12         | 13 | 14 | 15 | 16 | 17 | 18 |
| 19         | 20 | 21 | 22 | 23 | 24 | 25 |
| 26         | 27 | 28 | 29 | 30 | 31 |    |

| April 2012 |    |    |    |    |    |    |
|------------|----|----|----|----|----|----|
| Mo         | Tu | We | Th | Fr | Sa | Su |
|            |    |    |    |    |    | 1  |
| 2          | 3  | 4  | 5  | 6  | 7  | 8  |
| 9          | 10 | 11 | 12 | 13 | 14 | 15 |
| 16         | 17 | 18 | 19 | 20 | 21 | 22 |
| 23         | 24 | 25 | 26 | 27 | 28 | 29 |
| 30         |    |    |    |    |    |    |

## 12 March

- ☐ 00:00 Week A ➡
- ☐ 00:00 Yr7 Interform PE ➡
- ☐ Form Council
- ☐ Newsletter Content Deadline

## 13 March

- ☐ ⬅ Week A ➡
- ☐ ⬅ Yr7 Interform PE ➡
- ☐ Yr 11 & 13 Report deadline
- ☒ 16:00 - 17:30 GCSE Friends & Family Drama performace
- ☒ 18:30 - 20:30 6th Form Intervention Evening

## 14 March

- ☐ ⬅ Week A ➡
- ☐ ⬅ Yr7 Interform PE ➡
- ☐ Deadline for GCE entries
- ☒ 16:00 - 17:30 GCSE Friends & Family drama Performace

## 15 March

- ☐ ⬅ Week A ➡
- ☐ ⬅ 00:00 Yr7 Interform PE
- ☐ 00:00 Proposed dates for Yr 13 Biology field trip ➡
- ☐ Year Council
- ☐ Yr 7 & 9 Report deadline

## 16 March

- ☐ ⬅ 00:00 Week A ➡
- ☐ ⬅ Proposed dates for Yr 13 Biology field trip ➡
- ☐ Sports Relief

## 17 March

- ☐ ⬅ Proposed dates for Yr 13 Biology field trip ➡

## 18 March

- ☐ ⬅ 00:00 Proposed dates for Yr 13 Biology field trip ➡

**19 March 2012 -  
25 March 2012**

| March 2012 |    |    |    |    |    |    | April 2012 |    |    |    |    |    |    |
|------------|----|----|----|----|----|----|------------|----|----|----|----|----|----|
| Mo         | Tu | We | Th | Fr | Sa | Su | Mo         | Tu | We | Th | Fr | Sa | Su |
|            |    |    |    | 1  | 2  | 3  | 4          |    |    |    |    |    | 1  |
| 5          | 6  | 7  | 8  | 9  | 10 | 11 |            | 2  | 3  | 4  | 5  | 6  | 7  |
| 12         | 13 | 14 | 15 | 16 | 17 | 18 |            | 9  | 10 | 11 | 12 | 13 | 14 |
| 19         | 20 | 21 | 22 | 23 | 24 | 25 |            | 16 | 17 | 18 | 19 | 20 | 21 |
| 26         | 27 | 28 | 29 | 30 | 31 |    |            | 23 | 24 | 25 | 26 | 27 | 28 |
|            |    |    |    |    |    |    |            | 30 |    |    |    |    |    |

## 19 March

- ☐ 00:00 Week B →
- ☐ School Council meet Head

## 20 March

- ☐ ← Week B →
- ☒ 16:30 - 18:00 KS4 Performing Arts showcase

## 21 March

- ☐ ← Week B →
- ☐ 00:00 Departmental Review SLT →
- ☐ 00:00 GCSE PE Moderation →
- ☐ 16:15 - 17:15 Whole School TADM

## 22 March

- ☐ ← Week B →
- ☐ ← Departmental Review SLT →
- ☐ ← GCSE PE Moderation →

## 23 March

- ☐ ← 00:00 Week B
- ☐ ← 00:00 Departmental Review SLT
- ☐ ← 00:00 GCSE PE Moderation

## 24 March

## 25 March

**26 March 2012 -  
01 April 2012**

| March 2012 |    |    |    |    |    |    | April 2012 |    |    |    |    |    |    |
|------------|----|----|----|----|----|----|------------|----|----|----|----|----|----|
| Mo         | Tu | We | Th | Fr | Sa | Su | Mo         | Tu | We | Th | Fr | Sa | Su |
|            |    |    |    | 1  | 2  | 3  | 4          |    |    |    |    |    | 1  |
| 5          | 6  | 7  | 8  | 9  | 10 | 11 |            | 2  | 3  | 4  | 5  | 6  | 7  |
| 12         | 13 | 14 | 15 | 16 | 17 | 18 |            | 9  | 10 | 11 | 12 | 13 | 14 |
| 19         | 20 | 21 | 22 | 23 | 24 | 25 |            | 16 | 17 | 18 | 19 | 20 | 21 |
| 26         | 27 | 28 | 29 | 30 | 31 |    |            | 23 | 24 | 25 | 26 | 27 | 28 |
|            |    |    |    |    |    |    |            | 30 |    |    |    |    |    |

## 26 March

- ☐ 00:00 Week A →
- ☐ 00:00 Yr 9 Interform PE →
- ☐ 00:00 GCSE Drama Exam →
- ☒ 08:00 - 08:30 Head's review of January results.  
Meeting with Lead Teachers

## 27 March

- ☐ ← Week A →
- ☐ ← Yr 9 Interform PE →
- ☐ ← 00:00 GCSE Drama Exam
- ☐ Music creative task retake (TBC)

## 28 March

- ☐ ← Week A →
- ☐ ← Yr 9 Interform PE →
- ☐ Student Learning Conference
- ☒ 16:00 - 17:30 Middle Leadership Team TADM

## 29 March

- ☐ ← Week A →
- ☐ ← 00:00 Yr 9 Interform PE
- ☐ 00:00 On Line Learning Days →
- ☒ 08:30 - 15:30 Target Setting Day 1

## 30 March

- ☐ ← 00:00 Week A
- ☐ ← 00:00 On Line Learning Days
- ☒ 08:30 - 15:30 Target Setting Day 2

## 31 March

## 01 April

**02 April 2012 -  
08 April 2012**

| April 2012 |    |    |    |    |    |    | May 2012 |    |    |    |    |    |    |
|------------|----|----|----|----|----|----|----------|----|----|----|----|----|----|
| Mo         | Tu | We | Th | Fr | Sa | Su | Mo       | Tu | We | Th | Fr | Sa | Su |
|            |    |    |    |    |    | 1  |          | 1  | 2  | 3  | 4  | 5  | 6  |
| 2          | 3  | 4  | 5  | 6  | 7  | 8  | 7        | 8  | 9  | 10 | 11 | 12 | 13 |
| 9          | 10 | 11 | 12 | 13 | 14 | 15 | 14       | 15 | 16 | 17 | 18 | 19 | 20 |
| 16         | 17 | 18 | 19 | 20 | 21 | 22 | 21       | 22 | 23 | 24 | 25 | 26 | 27 |
| 23         | 24 | 25 | 26 | 27 | 28 | 29 | 28       | 29 | 30 | 31 |    |    |    |
| 30         |    |    |    |    |    |    |          |    |    |    |    |    |    |

**02 April**

☐ 00:00 Easter Holiday ➡

**03 April**

☐ ⬅ Easter Holiday ➡

**04 April**

☐ ⬅ Easter Holiday ➡

**05 April**

☐ ⬅ Easter Holiday ➡

**06 April**

☐ ⬅ Easter Holiday ➡

**07 April**

☐ ⬅ Easter Holiday ➡

**08 April**

☐ ⬅ Easter Holiday ➡

**09 April 2012 -  
15 April 2012**

| April 2012 |    |    |    |    |    |    |
|------------|----|----|----|----|----|----|
| Mo         | Tu | We | Th | Fr | Sa | Su |
|            |    |    |    |    |    | 1  |
| 2          | 3  | 4  | 5  | 6  | 7  | 8  |
| 9          | 10 | 11 | 12 | 13 | 14 | 15 |
| 16         | 17 | 18 | 19 | 20 | 21 | 22 |
| 23         | 24 | 25 | 26 | 27 | 28 | 29 |
| 30         |    |    |    |    |    |    |

| May 2012 |    |    |    |    |    |    |
|----------|----|----|----|----|----|----|
| Mo       | Tu | We | Th | Fr | Sa | Su |
|          | 1  | 2  | 3  | 4  | 5  | 6  |
| 7        | 8  | 9  | 10 | 11 | 12 | 13 |
| 14       | 15 | 16 | 17 | 18 | 19 | 20 |
| 21       | 22 | 23 | 24 | 25 | 26 | 27 |
| 28       | 29 | 30 | 31 |    |    |    |

**09 April**

☐ ← Easter Holiday →

☐ March results

**10 April**

☐ ← Easter Holiday →

**11 April**

☐ ← Easter Holiday →

**12 April**

☐ ← Easter Holiday →

**13 April**

☐ ← Easter Holiday →

**14 April**

☐ ← Easter Holiday →

**15 April**

☐ ← 00:00 Easter Holiday →



**16 April 2012 -  
22 April 2012**

| April 2012 |    |    |    |    |    |    |
|------------|----|----|----|----|----|----|
| Mo         | Tu | We | Th | Fr | Sa | Su |
|            |    |    |    |    |    | 1  |
| 2          | 3  | 4  | 5  | 6  | 7  | 8  |
| 9          | 10 | 11 | 12 | 13 | 14 | 15 |
| 16         | 17 | 18 | 19 | 20 | 21 | 22 |
| 23         | 24 | 25 | 26 | 27 | 28 | 29 |
| 30         |    |    |    |    |    |    |

| May 2012 |    |    |    |    |    |    |
|----------|----|----|----|----|----|----|
| Mo       | Tu | We | Th | Fr | Sa | Su |
|          | 1  | 2  | 3  | 4  | 5  | 6  |
| 7        | 8  | 9  | 10 | 11 | 12 | 13 |
| 14       | 15 | 16 | 17 | 18 | 19 | 20 |
| 21       | 22 | 23 | 24 | 25 | 26 | 27 |
| 28       | 29 | 30 | 31 |    |    |    |

**16 April**

- ☐ 00:00 Week B →
- ☐ Return to School

**17 April**

- ☐ ← Week B →
- ☐ Start of KS3 Exam

**18 April**

- ☐ ← Week B →
- ☐ 16:15 - 17:15 Whole School TADM

**19 April**

- ☐ ← Week B →
- ☐ Yr 8 HPV 3rd Vaccination

**20 April**

- ☐ ← 00:00 Week B

**21 April**

**22 April**

**23 April 2012 -  
29 April 2012**

| April 2012 |    |    |    |    |    |    |
|------------|----|----|----|----|----|----|
| Mo         | Tu | We | Th | Fr | Sa | Su |
|            |    |    |    |    |    | 1  |
| 2          | 3  | 4  | 5  | 6  | 7  | 8  |
| 9          | 10 | 11 | 12 | 13 | 14 | 15 |
| 16         | 17 | 18 | 19 | 20 | 21 | 22 |
| 23         | 24 | 25 | 26 | 27 | 28 | 29 |
| 30         |    |    |    |    |    |    |

| May 2012 |    |    |    |    |    |    |
|----------|----|----|----|----|----|----|
| Mo       | Tu | We | Th | Fr | Sa | Su |
|          | 1  | 2  | 3  | 4  | 5  | 6  |
| 7        | 8  | 9  | 10 | 11 | 12 | 13 |
| 14       | 15 | 16 | 17 | 18 | 19 | 20 |
| 21       | 22 | 23 | 24 | 25 | 26 | 27 |
| 28       | 29 | 30 | 31 |    |    |    |

**23 April**

- ☐ 00:00 Week A ➡
- ☐ 00:00 Yr 8 Interform PE ➡
- ☐ Review of "Red Students" KS3, KS4 & KS5 in Department meetings

**24 April**

- ☐ ⬅ Week A ➡
- ☐ ⬅ Yr 8 Interform PE ➡

**25 April**

- ☐ ⬅ Week A ➡
- ☐ ⬅ Yr 8 Interform PE ➡
- ☐ 16:00 - 17:45 Middle Leadership Team TADM

**26 April**

- ☐ ⬅ Week A ➡
- ☐ ⬅ 00:00 Yr 8 Interform PE
- ☐ Yr 8 Catch Up HPV 3rd

**27 April**

- ☐ ⬅ 00:00 Week A

**28 April**

**29 April**

**30 April 2012 -  
06 May 2012**

| April 2012 |    |    |    |    |    |    |
|------------|----|----|----|----|----|----|
| Mo         | Tu | We | Th | Fr | Sa | Su |
|            |    |    |    |    |    | 1  |
| 2          | 3  | 4  | 5  | 6  | 7  | 8  |
| 9          | 10 | 11 | 12 | 13 | 14 | 15 |
| 16         | 17 | 18 | 19 | 20 | 21 | 22 |
| 23         | 24 | 25 | 26 | 27 | 28 | 29 |
| 30         |    |    |    |    |    |    |

| May 2012 |    |    |    |    |    |    |
|----------|----|----|----|----|----|----|
| Mo       | Tu | We | Th | Fr | Sa | Su |
|          | 1  | 2  | 3  | 4  | 5  | 6  |
| 7        | 8  | 9  | 10 | 11 | 12 | 13 |
| 14       | 15 | 16 | 17 | 18 | 19 | 20 |
| 21       | 22 | 23 | 24 | 25 | 26 | 27 |
| 28       | 29 | 30 | 31 |    |    |    |

**30 April**

☐ 00:00 Week B ➡

**01 May**

☐ ⬅ Week B ➡

☐ 00:00 Dance Festival TBC ➡

☐ Form Council

**02 May**

☐ ⬅ Week B ➡

☐ ⬅ Dance Festival TBC ➡

**03 May**

☐ ⬅ Week B ➡

☐ ⬅ 00:00 Dance Festival TBC

☐ Exam period starts

☐ Year Council

**04 May**

☐ ⬅ 00:00 Week B

**05 May**

**06 May**

**07 May 2012 -  
13 May 2012**

| May 2012 |    |    |    |    |    |    | June 2012 |    |    |    |    |    |    |
|----------|----|----|----|----|----|----|-----------|----|----|----|----|----|----|
| Mo       | Tu | We | Th | Fr | Sa | Su | Mo        | Tu | We | Th | Fr | Sa | Su |
|          | 1  | 2  | 3  | 4  | 5  | 6  |           |    |    |    | 1  | 2  | 3  |
| 7        | 8  | 9  | 10 | 11 | 12 | 13 | 4         | 5  | 6  | 7  | 8  | 9  | 10 |
| 14       | 15 | 16 | 17 | 18 | 19 | 20 | 11        | 12 | 13 | 14 | 15 | 16 | 17 |
| 21       | 22 | 23 | 24 | 25 | 26 | 27 | 18        | 19 | 20 | 21 | 22 | 23 | 24 |
| 28       | 29 | 30 | 31 |    |    |    | 25        | 26 | 27 | 28 | 29 | 30 |    |

**07 May**

☐ May Day Bank Holiday

**08 May**

☐ 00:00 Week A →

☐ 00:00 Yr 7 Interform PE →

☐ School Council

☐ Year 13 Leavers Tea

**09 May**

☐ ← Week A →

☐ ← Yr 7 Interform PE →

**10 May**

☐ ← Week A →

☐ ← 00:00 Yr 7 Interform PE

☒ 09:30 - 10:15 House Assemblies

**11 May**

☐ ← 00:00 Week A

**12 May**

**13 May**

**14 May 2012 -  
20 May 2012**

| May 2012 |    |    |    |    |    |    |
|----------|----|----|----|----|----|----|
| Mo       | Tu | We | Th | Fr | Sa | Su |
|          | 1  | 2  | 3  | 4  | 5  | 6  |
| 7        | 8  | 9  | 10 | 11 | 12 | 13 |
| 14       | 15 | 16 | 17 | 18 | 19 | 20 |
| 21       | 22 | 23 | 24 | 25 | 26 | 27 |
| 28       | 29 | 30 | 31 |    |    |    |

| June 2012 |    |    |    |    |    |    |
|-----------|----|----|----|----|----|----|
| Mo        | Tu | We | Th | Fr | Sa | Su |
|           |    |    |    | 1  | 2  | 3  |
| 4         | 5  | 6  | 7  | 8  | 9  | 10 |
| 11        | 12 | 13 | 14 | 15 | 16 | 17 |
| 18        | 19 | 20 | 21 | 22 | 23 | 24 |
| 25        | 26 | 27 | 28 | 29 | 30 |    |

## 14 May

- ☐ 00:00 Written exams start ➡
- ☐ 00:00 Week B ➡
- ☐ Newsletter Content Deadline

## 15 May

- ☐ ⬅ Written exams start ➡
- ☐ ⬅ Week B ➡
- ☐ AS Chemistry Exam
- ☐ Estimated Grades for GCSE & GCE
- ☐ OCR Biology Coursework

## 16 May

- ☐ ⬅ Written exams start ➡
- ☐ ⬅ Week B ➡
- ☐ 16:15 - 17:15 Whole School TADM

## 17 May

- ☐ ⬅ Written exams start ➡
- ☐ ⬅ Week B ➡

## 18 May

- ☐ ⬅ Written exams start ➡
- ☐ ⬅ 00:00 Week B

## 19 May

- ☐ ⬅ Written exams start ➡

## 20 May

- ☐ ⬅ Written exams start ➡

**21 May 2012 -  
27 May 2012**

| May 2012 |    |    |    |    |    |    |
|----------|----|----|----|----|----|----|
| Mo       | Tu | We | Th | Fr | Sa | Su |
|          | 1  | 2  | 3  | 4  | 5  | 6  |
| 7        | 8  | 9  | 10 | 11 | 12 | 13 |
| 14       | 15 | 16 | 17 | 18 | 19 | 20 |
| 21       | 22 | 23 | 24 | 25 | 26 | 27 |
| 28       | 29 | 30 | 31 |    |    |    |

| June 2012 |    |    |    |    |    |    |
|-----------|----|----|----|----|----|----|
| Mo        | Tu | We | Th | Fr | Sa | Su |
|           |    |    |    | 1  | 2  | 3  |
| 4         | 5  | 6  | 7  | 8  | 9  | 10 |
| 11        | 12 | 13 | 14 | 15 | 16 | 17 |
| 18        | 19 | 20 | 21 | 22 | 23 | 24 |
| 25        | 26 | 27 | 28 | 29 | 30 |    |

## 21 May

- ☐ **Written exams start** ➡
- ☐ **00:00 Week A** ➡
- ☐ **00:00 Yr 9 Interform PE** ➡
- ☐ **AS Biology Exam p.m.**
- ☐ **GCSE Biology Exam a.m.**
- ☐ **Yr11 Booster Timetable**

## 22 May

- ☐ **Written exams start** ➡
- ☐ **Week A** ➡
- ☐ **Yr 9 Interform PE** ➡

## 23 May

- ☐ **Written exams start** ➡
- ☐ **Week A** ➡
- ☐ **Yr 9 Interform PE** ➡
- ☐ **AS Chemistry Exam**
- ☒ **16:00 - 17:45 Middle Leader Team TADM**

## 24 May

- ☐ **Written exams start** ➡
- ☐ **Week A** ➡
- ☐ **00:00 Yr 9 Interform PE**
- ☐ **Middle Leadership Team TADM**

## 25 May

- ☐ **Written exams start** ➡
- ☐ **00:00 Week A**

## 26 May

- ☐ **Written exams start** ➡

## 27 May

- ☐ **Written exams start** ➡

**28 May 2012 -  
03 June 2012**

| May 2012 |    |    |    |    |    |    |
|----------|----|----|----|----|----|----|
| Mo       | Tu | We | Th | Fr | Sa | Su |
|          | 1  | 2  | 3  | 4  | 5  | 6  |
| 7        | 8  | 9  | 10 | 11 | 12 | 13 |
| 14       | 15 | 16 | 17 | 18 | 19 | 20 |
| 21       | 22 | 23 | 24 | 25 | 26 | 27 |
| 28       | 29 | 30 | 31 |    |    |    |

| June 2012 |    |    |    |    |    |    |
|-----------|----|----|----|----|----|----|
| Mo        | Tu | We | Th | Fr | Sa | Su |
|           |    |    |    | 1  | 2  | 3  |
| 4         | 5  | 6  | 7  | 8  | 9  | 10 |
| 11        | 12 | 13 | 14 | 15 | 16 | 17 |
| 18        | 19 | 20 | 21 | 22 | 23 | 24 |
| 25        | 26 | 27 | 28 | 29 | 30 |    |

## 28 May

- ☐ Written exams start
- ☐ 00:00 Week B
- ☐ Queen's Diamond Jubilee

## 29 May

- ☐ Written exams start
- ☐ Week B
- ☐ NQT Induction
- ☐ Yr11 & 13 Report deadline

## 30 May

- ☐ Written exams start
- ☐ Week B

## 31 May

- ☐ Written exams start
- ☐ Week B
- ☐ Yr10 & 12 report deadline

## 01 June

- ☐ Written exams start
- ☐ 00:00 Week B
- ☐ SWELTEC Ends

## 02 June

- ☐ Written exams start

## 03 June

- ☐ Written exams start

**04 June 2012 -  
10 June 2012**

| June 2012 |    |    |    |    |    |    |
|-----------|----|----|----|----|----|----|
| Mo        | Tu | We | Th | Fr | Sa | Su |
|           |    |    |    | 1  | 2  | 3  |
| 4         | 5  | 6  | 7  | 8  | 9  | 10 |
| 11        | 12 | 13 | 14 | 15 | 16 | 17 |
| 18        | 19 | 20 | 21 | 22 | 23 | 24 |
| 25        | 26 | 27 | 28 | 29 | 30 |    |

| July 2012 |    |    |    |    |    |    |
|-----------|----|----|----|----|----|----|
| Mo        | Tu | We | Th | Fr | Sa | Su |
|           |    |    |    |    |    | 1  |
| 2         | 3  | 4  | 5  | 6  | 7  | 8  |
| 9         | 10 | 11 | 12 | 13 | 14 | 15 |
| 16        | 17 | 18 | 19 | 20 | 21 | 22 |
| 23        | 24 | 25 | 26 | 27 | 28 | 29 |
| 30        | 31 |    |    |    |    |    |

## 04 June

- ☐ ← Written exams start →
- ☐ ← 00:00 Half Term →

## 05 June

- ☐ ← Written exams start →
- ☐ ← Half Term →

## 06 June

- ☐ ← Written exams start →
- ☐ ← Half Term →

## 07 June

- ☐ ← Written exams start →
- ☐ ← Half Term →

## 08 June

- ☐ ← Written exams start →
- ☐ ← 00:00 Half Term →

## 09 June

- ☐ ← Written exams start →

## 10 June

- ☐ ← Written exams start →



**11 June 2012 -  
17 June 2012**

| June 2012 |    |    |    |    |    |    |
|-----------|----|----|----|----|----|----|
| Mo        | Tu | We | Th | Fr | Sa | Su |
|           |    |    |    | 1  | 2  | 3  |
| 4         | 5  | 6  | 7  | 8  | 9  | 10 |
| 11        | 12 | 13 | 14 | 15 | 16 | 17 |
| 18        | 19 | 20 | 21 | 22 | 23 | 24 |
| 25        | 26 | 27 | 28 | 29 | 30 |    |

| July 2012 |    |    |    |    |    |    |
|-----------|----|----|----|----|----|----|
| Mo        | Tu | We | Th | Fr | Sa | Su |
|           |    |    |    |    |    | 1  |
| 2         | 3  | 4  | 5  | 6  | 7  | 8  |
| 9         | 10 | 11 | 12 | 13 | 14 | 15 |
| 16        | 17 | 18 | 19 | 20 | 21 | 22 |
| 23        | 24 | 25 | 26 | 27 | 28 | 29 |
| 30        | 31 |    |    |    |    |    |

## 11 June

- ☐ ← Written exams start →
- ☐ 00:00 Week A →
- ☐ Return to School

## 12 June

- ☐ ← Written exams start →
- ☐ ← Week A →
- ☐ Anne Frank Day

## 13 June

- ☐ ← Written exams start →
- ☐ ← Week A →
- ☐ AS Chemistry Exam

## 14 June

- ☐ ← Written exams start →
- ☐ ← Week A →

## 15 June

- ☐ ← Written exams start →
- ☐ 00:00 Week A
- ☐ AS Biology Exam (AM)
- ☐ BTEC L2 & L3 CW Deadline

## 16 June

- ☐ ← Written exams start →

## 17 June

- ☐ ← Written exams start →

**18 June 2012 -  
24 June 2012**

| June 2012 |    |    |    |    |    |    |
|-----------|----|----|----|----|----|----|
| Mo        | Tu | We | Th | Fr | Sa | Su |
|           |    |    |    | 1  | 2  | 3  |
| 4         | 5  | 6  | 7  | 8  | 9  | 10 |
| 11        | 12 | 13 | 14 | 15 | 16 | 17 |
| 18        | 19 | 20 | 21 | 22 | 23 | 24 |
| 25        | 26 | 27 | 28 | 29 | 30 |    |

| July 2012 |    |    |    |    |    |    |
|-----------|----|----|----|----|----|----|
| Mo        | Tu | We | Th | Fr | Sa | Su |
|           |    |    |    |    |    | 1  |
| 2         | 3  | 4  | 5  | 6  | 7  | 8  |
| 9         | 10 | 11 | 12 | 13 | 14 | 15 |
| 16        | 17 | 18 | 19 | 20 | 21 | 22 |
| 23        | 24 | 25 | 26 | 27 | 28 | 29 |
| 30        | 31 |    |    |    |    |    |

## 18 June

- ☐ ← Written exams start →
- ☐ 00:00 Week B →
- ☐ 00:01 Book Fair Week →

## 19 June

- ☐ ← Written exams start →
- ☐ ← Week B →
- ☐ ← Book Fair Week →
- ☐ A2 Chemistry Exam
- ☐ Yr 9 report deadline

## 20 June

- ☐ ← Written exams start →
- ☐ ← Week B →
- ☐ ← Book Fair Week →
- ☐ 16:15 - 17:15 Whole School TADM

## 21 June

- ☐ ← Written exams start →
- ☐ ← Week B →
- ☐ ← Book Fair Week →
- ☒ 09:30 - 10:15 House Assemblies

## 22 June

- ☐ ← Written exams start →
- ☐ ← 00:00 Week B →
- ☐ ← 00:00 Book Fair Week →
- ☐ BTEC L2 & L3 Grade submission

## 23 June

- ☐ ← Written exams start →
- ☐ Summer Fete

## 24 June

- ☐ ← Written exams start →

**25 June 2012 -  
01 July 2012**

| June 2012 |    |    |    |    |    |    |
|-----------|----|----|----|----|----|----|
| Mo        | Tu | We | Th | Fr | Sa | Su |
|           |    |    |    | 1  | 2  | 3  |
| 4         | 5  | 6  | 7  | 8  | 9  | 10 |
| 11        | 12 | 13 | 14 | 15 | 16 | 17 |
| 18        | 19 | 20 | 21 | 22 | 23 | 24 |
| 25        | 26 | 27 | 28 | 29 | 30 |    |

| July 2012 |    |    |    |    |    |    |
|-----------|----|----|----|----|----|----|
| Mo        | Tu | We | Th | Fr | Sa | Su |
|           |    |    |    |    |    | 1  |
| 2         | 3  | 4  | 5  | 6  | 7  | 8  |
| 9         | 10 | 11 | 12 | 13 | 14 | 15 |
| 16        | 17 | 18 | 19 | 20 | 21 | 22 |
| 23        | 24 | 25 | 26 | 27 | 28 | 29 |
| 30        | 31 |    |    |    |    |    |

## 25 June

- ☐ ⇐ Written exams start ➡
- ☐ 00:00 Week A ➡
- ☐ 00:00 SLT Marking audit ➡
- ☐ 00:01 National School Sports Week ➡
- ☐ Form Council

## 26 June

- ☐ ⇐ Written exams start ➡
- ☐ ⇐ Week A ➡
- ☐ ⇐ 00:00 SLT Marking audit
- ☐ ⇐ National School Sports Week ➡
- ☐ Yr7 & 8 Report deadline

## 27 June

- ☐ ⇐ 00:00 Written exams start
- ☐ ⇐ Week A ➡
- ☐ ⇐ National School Sports Week ➡
- ☐ 16:00 - 17:30 Middle Leadership Team TADM

## 28 June

- ☐ ⇐ Week A ➡
- ☐ ⇐ National School Sports Week ➡
- ☐ Year Council

## 29 June

- ☐ ⇐ 00:00 Week A
- ☐ ⇐ 00:00 National School Sports Week
- ☐ Deadline for Staff Handbook
- ☐ Staff Handbook Deadline
- ☐ Yr 13 Final Leaving Day
- ☐ Yr6 Induction Pupil Induction Day
- ☒ 18:00 - 00:00 Yr13 Graduation Ball

## 30 June

## 01 July

**02 July 2012 -  
08 July 2012**

| July 2012 |    |    |    |    |    |    | August 2012 |    |    |    |    |    |    |
|-----------|----|----|----|----|----|----|-------------|----|----|----|----|----|----|
| Mo        | Tu | We | Th | Fr | Sa | Su | Mo          | Tu | We | Th | Fr | Sa | Su |
|           |    |    |    |    |    | 1  |             |    | 1  | 2  | 3  | 4  | 5  |
| 2         | 3  | 4  | 5  | 6  | 7  | 8  | 6           | 7  | 8  | 9  | 10 | 11 | 12 |
| 9         | 10 | 11 | 12 | 13 | 14 | 15 | 13          | 14 | 15 | 16 | 17 | 18 | 19 |
| 16        | 17 | 18 | 19 | 20 | 21 | 22 | 20          | 21 | 22 | 23 | 24 | 25 | 26 |
| 23        | 24 | 25 | 26 | 27 | 28 | 29 | 27          | 28 | 29 | 30 | 31 |    |    |
| 30        | 31 |    |    |    |    |    |             |    |    |    |    |    |    |

## 02 July

- ☐ 00:00 Curriculum Week 2 ➡
- ☐ 00:00 Week B ➡
- ☐ 00:00 Aim Higher Day ➡
- ☐ Estimated entries for Nov & Jan exams (Head's Office)
- ☐ Newsletter Content Deadline

## 03 July

- ☐ ⬅ Curriculum Week 2 ➡
- ☐ ⬅ Week B ➡
- ☐ ⬅ Aim Higher Day ➡

## 04 July

- ☐ ⬅ Curriculum Week 2 ➡
- ☐ ⬅ Week B ➡
- ☐ ⬅ 00:00 Aim Higher Day

## 05 July

- ☐ ⬅ Curriculum Week 2 ➡
- ☐ ⬅ Week B ➡
- ☐ Yr 10 Swanage trip
- ☐ Yr 11 & 13 Art Exhibition

## 06 July

- ☐ ⬅ 00:00 Curriculum Week 2
- ☐ ⬅ 00:00 Week B

## 07 July

## 08 July

**09 July 2012 -  
15 July 2012**

| July 2012 |    |    |    |    |    |    | August 2012 |    |    |    |    |    |    |
|-----------|----|----|----|----|----|----|-------------|----|----|----|----|----|----|
| Mo        | Tu | We | Th | Fr | Sa | Su | Mo          | Tu | We | Th | Fr | Sa | Su |
|           |    |    |    |    |    | 1  |             |    | 1  | 2  | 3  | 4  | 5  |
| 2         | 3  | 4  | 5  | 6  | 7  | 8  | 6           | 7  | 8  | 9  | 10 | 11 | 12 |
| 9         | 10 | 11 | 12 | 13 | 14 | 15 | 13          | 14 | 15 | 16 | 17 | 18 | 19 |
| 16        | 17 | 18 | 19 | 20 | 21 | 22 | 20          | 21 | 22 | 23 | 24 | 25 | 26 |
| 23        | 24 | 25 | 26 | 27 | 28 | 29 | 27          | 28 | 29 | 30 | 31 |    |    |
| 30        | 31 |    |    |    |    |    |             |    |    |    |    |    |    |

**09 July**

- ☐ 00:00 Curriculum Week 3 ➡
- ☐ 00:00 Week A ➡

**10 July**

- ☐ ⬅ Curriculum Week 3 ➡
- ☐ ⬅ Week A ➡

**11 July**

- ☐ ⬅ Curriculum Week 3 ➡
- ☐ ⬅ Week A ➡

**12 July**

- ☐ ⬅ Curriculum Week 3 ➡
- ☐ ⬅ Week A ➡

**13 July**

- ☐ ⬅ 00:00 Curriculum Week 3
- ☐ ⬅ 00:00 Week A

**14 July**

**15 July**

**16 July 2012 -  
22 July 2012**

| July 2012 |    |    |    |    |    |    | August 2012 |    |    |    |    |    |    |
|-----------|----|----|----|----|----|----|-------------|----|----|----|----|----|----|
| Mo        | Tu | We | Th | Fr | Sa | Su | Mo          | Tu | We | Th | Fr | Sa | Su |
|           |    |    |    |    |    | 1  |             |    | 1  | 2  | 3  | 4  | 5  |
| 2         | 3  | 4  | 5  | 6  | 7  | 8  | 6           | 7  | 8  | 9  | 10 | 11 | 12 |
| 9         | 10 | 11 | 12 | 13 | 14 | 15 | 13          | 14 | 15 | 16 | 17 | 18 | 19 |
| 16        | 17 | 18 | 19 | 20 | 21 | 22 | 20          | 21 | 22 | 23 | 24 | 25 | 26 |
| 23        | 24 | 25 | 26 | 27 | 28 | 29 | 27          | 28 | 29 | 30 | 31 |    |    |
| 30        | 31 |    |    |    |    |    |             |    |    |    |    |    |    |

**16 July**

☐ 00:00 Week B →

☐ Review of "Red Students" KS3 in Department meetings

**17 July**

☐ ← Week B →

☐ School Council meet Head

☐ Yr11 Report deadline

**18 July**

☐ ← Week B →

**19 July**

☐ ← Week B →

☐ Performing Arts showcase TBC

**20 July**

☐ ← 00:00 Week B

☐ Last Day of Term

**21 July**

**22 July**

**23 July 2012 -  
29 July 2012**

| July 2012 |    |    |    |    |    |    | August 2012 |    |    |    |    |    |    |
|-----------|----|----|----|----|----|----|-------------|----|----|----|----|----|----|
| Mo        | Tu | We | Th | Fr | Sa | Su | Mo          | Tu | We | Th | Fr | Sa | Su |
|           |    |    |    |    |    | 1  |             |    | 1  | 2  | 3  | 4  | 5  |
| 2         | 3  | 4  | 5  | 6  | 7  | 8  | 6           | 7  | 8  | 9  | 10 | 11 | 12 |
| 9         | 10 | 11 | 12 | 13 | 14 | 15 | 13          | 14 | 15 | 16 | 17 | 18 | 19 |
| 16        | 17 | 18 | 19 | 20 | 21 | 22 | 20          | 21 | 22 | 23 | 24 | 25 | 26 |
| 23        | 24 | 25 | 26 | 27 | 28 | 29 | 27          | 28 | 29 | 30 | 31 |    |    |
| 30        | 31 |    |    |    |    |    |             |    |    |    |    |    |    |

**23 July**

☐ 00:00 Day of in Lieu of Evening TADM ➡

**24 July**

☐ ⬅ 00:00 Day of in Lieu of Evening TADM

**25 July**

☐ 00:00 Occasional Day ➡

**26 July**

☐ ⬅ 00:00 Occasional Day

**27 July**

☐ Day off in Lieu of Queen's Diamond Jubilee

**28 July**

**29 July**

**30 July 2012 -  
05 August 2012**

| July 2012 |    |    |    |    |    |    |
|-----------|----|----|----|----|----|----|
| Mo        | Tu | We | Th | Fr | Sa | Su |
|           |    |    |    |    |    | 1  |
| 2         | 3  | 4  | 5  | 6  | 7  | 8  |
| 9         | 10 | 11 | 12 | 13 | 14 | 15 |
| 16        | 17 | 18 | 19 | 20 | 21 | 22 |
| 23        | 24 | 25 | 26 | 27 | 28 | 29 |
| 30        | 31 |    |    |    |    |    |

| August 2012 |    |    |    |    |    |    |
|-------------|----|----|----|----|----|----|
| Mo          | Tu | We | Th | Fr | Sa | Su |
|             |    |    | 1  | 2  | 3  | 4  |
| 5           | 6  | 7  | 8  | 9  | 10 | 11 |
| 12          | 13 | 14 | 15 | 16 | 17 | 18 |
| 19          | 20 | 21 | 22 | 23 | 24 | 25 |
| 26          | 27 | 28 | 29 | 30 | 31 |    |

**30 July**

**31 July**

**01 August**

**02 August**

**03 August**

**04 August**

**05 August**



**06 August 2012 -  
12 August 2012**

| August 2012 |    |    |    |    |    |    |
|-------------|----|----|----|----|----|----|
| Mo          | Tu | We | Th | Fr | Sa | Su |
|             |    | 1  | 2  | 3  | 4  | 5  |
| 6           | 7  | 8  | 9  | 10 | 11 | 12 |
| 13          | 14 | 15 | 16 | 17 | 18 | 19 |
| 20          | 21 | 22 | 23 | 24 | 25 | 26 |
| 27          | 28 | 29 | 30 | 31 |    |    |

| September 2012 |    |    |    |    |    |    |
|----------------|----|----|----|----|----|----|
| Mo             | Tu | We | Th | Fr | Sa | Su |
|                |    |    |    |    |    | 1  |
| 2              | 3  | 4  | 5  | 6  | 7  | 8  |
| 9              | 10 | 11 | 12 | 13 | 14 | 15 |
| 16             | 17 | 18 | 19 | 20 | 21 | 22 |
| 23             | 24 | 25 | 26 | 27 | 28 | 29 |
| 30             |    |    |    |    |    |    |

**06 August**

**07 August**

**08 August**

**09 August**

**10 August**

**11 August**

**12 August**

**13 August 2012 -  
19 August 2012**

| August 2012 |    |    |    |    |    |    |
|-------------|----|----|----|----|----|----|
| Mo          | Tu | We | Th | Fr | Sa | Su |
|             |    | 1  | 2  | 3  | 4  | 5  |
| 6           | 7  | 8  | 9  | 10 | 11 | 12 |
| 13          | 14 | 15 | 16 | 17 | 18 | 19 |
| 20          | 21 | 22 | 23 | 24 | 25 | 26 |
| 27          | 28 | 29 | 30 | 31 |    |    |

| September 2012 |    |    |    |    |    |     |
|----------------|----|----|----|----|----|-----|
| Mo             | Tu | We | Th | Fr | Sa | Su  |
|                |    |    |    |    |    | 1 2 |
| 3              | 4  | 5  | 6  | 7  | 8  | 9   |
| 10             | 11 | 12 | 13 | 14 | 15 | 16  |
| 17             | 18 | 19 | 20 | 21 | 22 | 23  |
| 24             | 25 | 26 | 27 | 28 | 29 | 30  |

**13 August**

**14 August**

**15 August**

**16 August**

☐ GCE Results

**17 August**

**18 August**

**19 August**

**20 August 2012 -  
26 August 2012**

| August 2012 |    |    |    |    |    |    | September 2012 |    |    |    |    |    |    |
|-------------|----|----|----|----|----|----|----------------|----|----|----|----|----|----|
| Mo          | Tu | We | Th | Fr | Sa | Su | Mo             | Tu | We | Th | Fr | Sa | Su |
|             |    |    | 1  | 2  | 3  | 4  | 5              |    |    |    |    | 1  | 2  |
| 6           | 7  | 8  | 9  | 10 | 11 | 12 |                | 3  | 4  | 5  | 6  | 7  | 8  |
| 13          | 14 | 15 | 16 | 17 | 18 | 19 |                | 10 | 11 | 12 | 13 | 14 | 15 |
| 20          | 21 | 22 | 23 | 24 | 25 | 26 |                | 17 | 18 | 19 | 20 | 21 | 22 |
| 27          | 28 | 29 | 30 | 31 |    |    |                | 24 | 25 | 26 | 27 | 28 | 29 |

**20 August**

**21 August**

**22 August**

**23 August**

☐ GCSE Results

**24 August**

**25 August**

**26 August**

**27 August 2012 -  
02 September 2012**

| August 2012 |    |    |    |    |    |    |
|-------------|----|----|----|----|----|----|
| Mo          | Tu | We | Th | Fr | Sa | Su |
|             |    | 1  | 2  | 3  | 4  | 5  |
| 6           | 7  | 8  | 9  | 10 | 11 | 12 |
| 13          | 14 | 15 | 16 | 17 | 18 | 19 |
| 20          | 21 | 22 | 23 | 24 | 25 | 26 |
| 27          | 28 | 29 | 30 | 31 |    |    |

| September 2012 |    |    |    |    |    |     |
|----------------|----|----|----|----|----|-----|
| Mo             | Tu | We | Th | Fr | Sa | Su  |
|                |    |    |    |    |    | 1 2 |
| 3              | 4  | 5  | 6  | 7  | 8  | 9   |
| 10             | 11 | 12 | 13 | 14 | 15 | 16  |
| 17             | 18 | 19 | 20 | 21 | 22 | 23  |
| 24             | 25 | 26 | 27 | 28 | 29 | 30  |

**27 August**

**28 August**

**29 August**

**30 August**

**31 August**

**01 September**

**02 September**